

Caldesmon Antibody

Rabbit Polyclonal

Antigen Affinity Purified

Protein ID NP_149129.2

Catalog No. A304-165A

GeneID 800

Lot No. A304-165A-1



APPLICATIONS	WB, IP, IHC
SPECIES REACTIVITY	Human
PRESUMED REACTIVITY	Based on 100% sequence identity, this antibody is predicted to react with Rat
AMOUNT	100 µl
CONCENTRATION	1000 µg/ml
STORAGE/SHELF LIFE	2 - 8° C / 1 year from date of receipt
PHYSICAL STATE	Liquid
BUFFER	Tris-citrate/phosphate buffer, pH 7 to 8 containing 0.09% Sodium Azide
ISOTYPE	IgG
ORIGIN	USA
PRODUCTION PROCEDURES	Antibody was affinity purified using an epitope specific to Caldesmon immobilized on solid support.

The epitope recognized by A304-165A maps to a region between residue 743 to 793 of human Caldesmon 1 using the numbering given in entry NP_149129.2 (GeneID 800).

Antibody concentration was determined by extinction coefficient: absorbance at 280 nm of 1.4 equals 1.0 mg of IgG.

APPLICATIONS Centrifuge tube to remove product from lid. Optimal working dilutions should be determined experimentally by the investigator. Prepare working dilution immediately before use.

Western Blot 1:2,000 - 1:10,000

Immunoprecipitation 2 - 10 µg/mg lysate

Immunohistochemistry 1:500 - 1:2,000. Epitope retrieval with citrate buffer pH 6.0 is recommended for FFPE tissue sections.

APPLICATION NOTES Western blot of immunoprecipitates performed using Normal Pig Serum (Cat. No. S100-020), Goat anti-Rabbit Light Chain HRP Conjugate (Cat. No. A120-113P) and 4-8% SDS-PAGE (link to IP-western blot protocol in Additional Info section below).

Western blot of lysates performed using standard western blot reagents and 4-8% SDS-PAGE.

IHC HUMAN CONTROLS Skin Squamous Cell Carcinoma

ADDITIONAL INFO <https://www.bethyl.com/product/A304-165A>

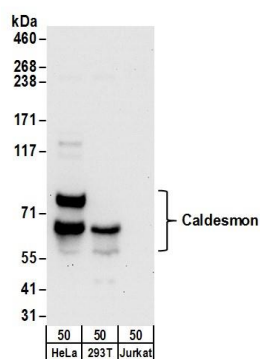
Use the link above to view SDS, a current list of citations, and other product specific information.

IP-western blot protocol: https://www.bethyl.com/content/protocol_IP_WB

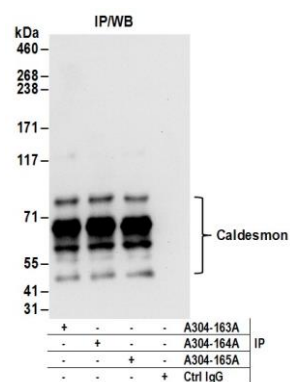
This document certifies that this product has met all of the quality control standards defined by Bethyl Laboratories, Inc.

Eric McIntush, PhD | Chief Scientific Officer

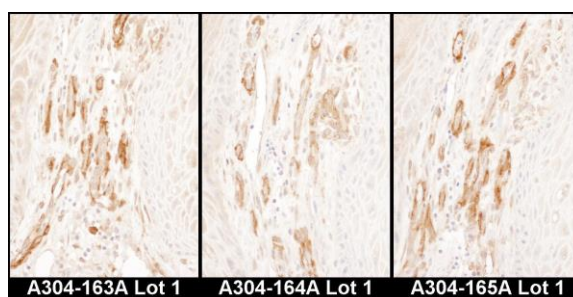
Date: June 21, 2019



Detection of human Caldesmon by western blot. *Samples:* Whole cell lysate (50 µg) from HeLa, HEK293T, and Jurkat cells. *Antibodies:* Affinity purified rabbit anti-Caldesmon antibody A304-165A (lot A304-165A-1) used for WB at 0.1 µg/ml. *Detection:* Chemiluminescence with an exposure time of 30 seconds.



Detection of human Caldesmon by western blot of immunoprecipitates. *Samples:* Whole cell lysate (1 mg for IP; 20% of IP loaded) from HeLa cells. *Antibodies:* Affinity purified rabbit anti-Caldesmon antibody A304-165A (lot A304-165A-1) used for IP at 6 µg/mg lysate. Caldesmon was also immunoprecipitated by rabbit anti-Caldesmon antibodies A304-163A and A304-164A. For blotting immunoprecipitated Caldesmon, A304-163A was used at 1 µg/ml. *Detection:* Chemiluminescence with an exposure time of 10 seconds.



Detection of human Caldesmon by immunohistochemistry. *Samples:* FFPE serial sections of human skin squamous cell carcinoma. *Antibody:* Affinity purified rabbit anti-Caldesmon Cat. No. A304-163A Lot1 (left image), A304-164A Lot1 (middle image) and Cat. No. A304-165A Lot1 (right image), used at a dilution of 1:1,000 (1 µg/ml). *Detection:* DAB