

GRAMD1A Antibody

Rabbit Polyclonal

Antigen Affinity Purified

Protein ID NP_065946.2

Catalog No. A304-160A

GeneID 57655

Lot No. A304-160A-1



APPLICATIONS WB, IP

SPECIES REACTIVITY Human

AMOUNT 100 µl

CONCENTRATION 1000 µg/ml

STORAGE/SHELF LIFE 2 – 8° C / 1 year from date of receipt

PHYSICAL STATE Liquid

BUFFER Tris-citrate/phosphate buffer, pH 7 to 8 containing 0.09% Sodium Azide

ISOTYPE IgG

ORIGIN USA

PRODUCTION PROCEDURES Antibody was affinity purified using an epitope specific to GRAMD1A immobilized on solid support.

The epitope recognized by A304-160A maps to a region between residue 674 to 724 of human GRAM Domain Containing 1A using the numbering given in entry NP_065946.2 (GeneID 57655).

Antibody concentration was determined by extinction coefficient: absorbance at 280 nm of 1.4 equals 1.0 mg of IgG.

APPLICATIONS Centrifuge tube to remove product from lid. Optimal working dilutions should be determined experimentally by the investigator. Prepare working dilution immediately before use.

Western Blot 1:1,000 – 1:5,000

Immunoprecipitation 2 – 10 µg/mg lysate

APPLICATION NOTES Western blot of immunoprecipitates performed using Normal Pig Serum (Cat. No. S100-020), Goat anti-Rabbit Light Chain HRP Conjugate (Cat. No. A120-113P) and 4-8% SDS-PAGE (link to IP-western blot protocol in Additional Info section below).

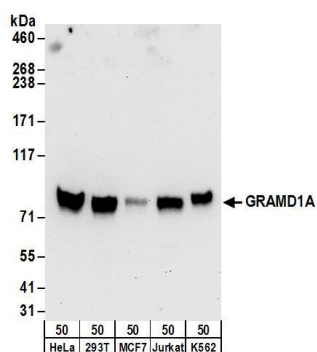
Western blot of lysates performed using standard western blot reagents and 4-8% SDS-PAGE.

ADDITIONAL INFO <https://www.bethyl.com/product/A304-160A>

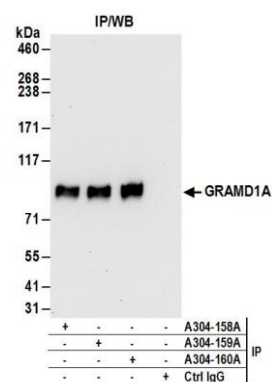
Use the link above to view SDS, a current list of citations, and other product specific information.

IP-western blot protocol: https://www.bethyl.com/content/protocol_IP_WB

This document certifies that this product has met all of the quality control standards defined by Bethyl Laboratories, Inc.
Eric McIntush, PhD | Chief Scientific Officer Date: June 21, 2019



Detection of human GRAMD1A by western blot. *Samples:* Whole cell lysate (50 μ g) from HeLa, HEK293T, MCF-7, Jurkat, and K-562 cells. *Antibodies:* Affinity purified rabbit anti-GRAMD1A antibody A304-160A (lot A304-160A-1) used for WB at 0.4 μ g/ml. *Detection:* Chemiluminescence with an exposure time of 30 seconds.



Detection of human GRAMD1A by western blot of immunoprecipitates. *Samples:* Whole cell lysate (1 mg for IP; 20% of IP loaded) from HeLa cells. *Antibodies:* Affinity purified rabbit anti-GRAMD1A antibody A304-160A (lot A304-160A-1) used for IP at 6 μ g/mg lysate. GRAMD1A was also immunoprecipitated by rabbit anti-GRAMD1A antibodies A304-158A and A304-159A. For blotting immunoprecipitated GRAMD1A, A304-160A was used at 1 μ g/ml. *Detection:* Chemiluminescence with an exposure time of 30 seconds.