

REEP4 Antibody

Rabbit Polyclonal

Antigen Affinity Purified

Protein ID NP_079508.2

Catalog No. A304-154A

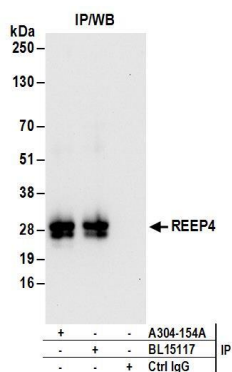
GeneID 80346

Lot No. A304-154A-1



| | |
|------------------------------|---|
| APPLICATIONS | IP |
| SPECIES REACTIVITY | Human |
| PRESUMED REACTIVITY | Based on 100% sequence identity, this antibody is predicted to react with Orangutan |
| AMOUNT | 100 µl |
| CONCENTRATION | 1000 µg/ml |
| STORAGE/SHELF LIFE | 2 - 8° C / 1 year from date of receipt |
| PHYSICAL STATE | Liquid |
| BUFFER | Tris-citrate/phosphate buffer, pH 7 to 8 containing 0.09% Sodium Azide |
| ISOTYPE | IgG |
| ORIGIN | USA |
| PRODUCTION PROCEDURES | Antibody was affinity purified using an epitope specific to REEP4 immobilized on solid support. The epitope recognized by A304-154A maps to a region between residue 200 to 225 of human Receptor Accessory Protein 4 using the numbering given in entry NP_079508.2 (GeneID 80346). Antibody concentration was determined by extinction coefficient: absorbance at 280 nm of 1.4 equals 1.0 mg of IgG. |
| APPLICATIONS | Centrifuge tube to remove product from lid. Optimal working dilutions should be determined experimentally by the investigator. Prepare working dilution immediately before use. Western Blot Not recommended. A304-154A has not performed satisfactorily when used for WB of REEP4 in crude preparations (e.g. whole cell lysate). This antibody can be used for WB of enriched (e.g. immunoprecipitated) sources of REEP4. Immunoprecipitation 2 - 10 µg/mg lysate |
| APPLICATION NOTES | Western blot of immunoprecipitates performed using Normal Pig Serum (Cat. No. S100-020), Goat anti-Rabbit Light Chain HRP Conjugate (Cat. No. A120-113P) and 4-20% SDS-PAGE (link to IP-western blot protocol in Additional Info section below). |
| ADDITIONAL INFO | https://www.bethyl.com/product/A304-154A Use the link above to view SDS, a current list of citations, and other product specific information. IP-western blot protocol: https://www.bethyl.com/content/protocol_IP_WB |

This document certifies that this product has met all of the quality control standards defined by Bethyl Laboratories, Inc.
Eric McIntush, PhD | Chief Scientific Officer Date: June 21, 2019



Detection of human REEP4 by western blot of immunoprecipitates. *Samples:* Whole cell lysate (1 mg for IP; 20% of IP loaded) from HeLa cells. *Antibodies:* Affinity purified rabbit anti-REEP4 antibody A304-154A (lot A304-154A-1) used for IP at 6 $\mu\text{g}/\text{mg}$ lysate. REEP4 was also immunoprecipitated by rabbit anti-REEP4 antibody BL15117. For blotting immunoprecipitated REEP4, A304-154A was used at 1 $\mu\text{g}/\text{ml}$. *Detection:* Chemiluminescence with an exposure time of 10 seconds.