

GAS2L3 Antibody

Rabbit Polyclonal

Antigen Affinity Purified

Protein ID NP_777602.1

Catalog No. A304-152A

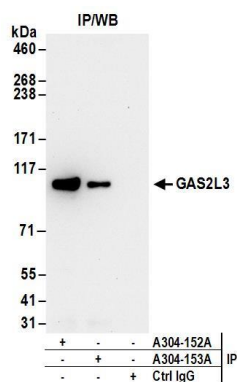
GeneID 283431

Lot No. A304-152A-1



APPLICATIONS	IP
SPECIES REACTIVITY	Human
AMOUNT	100 µl
CONCENTRATION	1000 µg/ml
STORAGE/SHELF LIFE	2 – 8° C / 1 year from date of receipt
PHYSICAL STATE	Liquid
BUFFER	Tris-citrate/phosphate buffer, pH 7 to 8 containing 0.09% Sodium Azide
ISOTYPE	IgG
ORIGIN	USA
PRODUCTION PROCEDURES	Antibody was affinity purified using an epitope specific to GAS2L3 immobilized on solid support. The epitope recognized by A304-152A maps to a region between residue 325 to 375 of human Growth Arrest-Specific 2 Like 3 using the numbering given in entry NP_777602.1 (GeneID 283431). Antibody concentration was determined by extinction coefficient: absorbance at 280 nm of 1.4 equals 1.0 mg of IgG.
APPLICATIONS	Centrifuge tube to remove product from lid. Optimal working dilutions should be determined experimentally by the investigator. Prepare working dilution immediately before use. Western Blot Not recommended. Use rabbit anti-GAS2L3 antibody A304-153A. Immunoprecipitation 2 – 10 µg/mg lysate
APPLICATION NOTES	Western blot of immunoprecipitates performed using Normal Pig Serum (Cat. No. S100-020), Goat anti-Rabbit Light Chain HRP Conjugate (Cat. No. A120-113P) and 4-8% SDS-PAGE (link to IP-western blot protocol in Additional Info section below).
ADDITIONAL INFO	https://www.bethyl.com/product/A304-152A Use the link above to view SDS, a current list of citations, and other product specific information. IP-western blot protocol: https://www.bethyl.com/content/protocol_IP_WB

This document certifies that this product has met all of the quality control standards defined by Bethyl Laboratories, Inc.
Eric McIntush, PhD | Chief Scientific Officer Date: June 21, 2019



Detection of human GAS2L3 by western blot of immunoprecipitates. *Samples:* Whole cell lysate (1 mg for IP; 20% of IP loaded) from HeLa cells. *Antibodies:* Affinity purified rabbit anti-GAS2L3 antibody A304-152A (lot A304-152A-1) used for IP at 6 μ g/mg lysate. GAS2L3 was also immunoprecipitated by rabbit anti-GAS2L3 antibody A304-153A. For blotting immunoprecipitated GAS2L3, A304-153A was used at 1 μ g/ml. *Detection:* Chemiluminescence with an exposure time of 10 seconds.