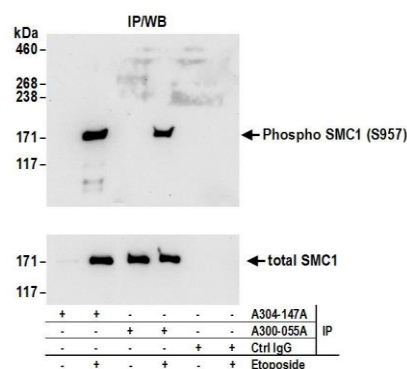
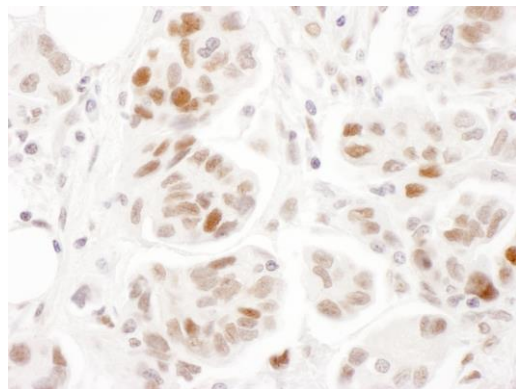


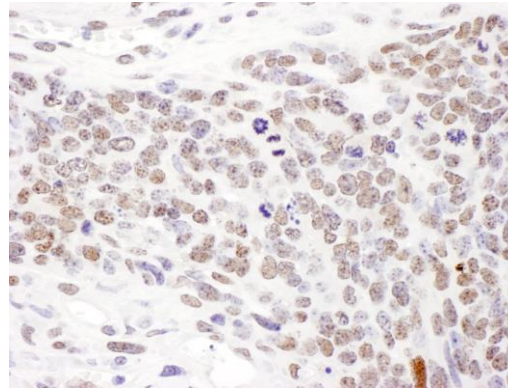
Detection of human Phospho SMC1 (S957) by western blot. *Samples:* Whole cell lysate (50 µg) from 293T cells treated with 100 µM etoposide for 2 hours (+) or mock treated (-) cells. *Antibodies:* Affinity purified rabbit anti-Phospho SMC1 (S957) antibody A304-147A (lot A304-147A-1) used for WB at 0.1 µg/ml. *Detection:* Chemiluminescence with an exposure time of 30 seconds. Lower panel shows western blot for total SMC1 using affinity purified rabbit anti-SMC1 antibody A300-055A at 0.1 µg/ml with an exposure time of 30 seconds.



Detection of human Phospho SMC1 (S957) by western blot of immunoprecipitates. *Samples:* Whole cell lysate (1 mg for IP; 20% of IP loaded) from 293T cells treated with 100 µM etoposide for 2 hours (+) or mock treated (-) cells. *Antibodies:* Phospho SMC1 (S957) was immunoprecipitated using affinity purified rabbit anti-Phospho SMC1 (S957) antibody A304-147A (lot A304-147A-1) at 6 µg/mg lysate. Total SMC1 was immunoprecipitated using rabbit anti-SMC1 antibody A300-055A at 6 µg/mg lysate. Phospho SMC1 (S957) was blotted using A304-147A at 0.1 µg/ml (upper panel). Total SMC1 was blotted using A300-055A at 0.1 µg/ml (lower panel). *Detection:* Chemiluminescence with exposure times of 30 seconds.



Detection of human Phospho SMC1 (S957) by immunohistochemistry. *Sample:* FFPE section of human ovarian carcinoma. *Antibody:* Affinity purified rabbit anti-Phospho SMC1 (S957) (Cat. No. A304-147A Lot1) used at a dilution of 1:5,000 (0.2 µg/ml). *Detection:* DAB



Detection of mouse Phospho SMC1 (S957) by immunohistochemistry. *Sample:* FFPE section of mouse teratoma. *Antibody:* Affinity purified rabbit anti-Phospho SMC1 (S957) (Cat. No. A304-147A Lot1) used at a dilution of 1:1,000 (1 µg/ml). *Detection:* DAB

