

Phospho KAP-1 (S824) Antibody

Rabbit Polyclonal

Antigen Affinity Purified Protein ID NP_035718.2

Catalog No. A304-146A GeneID 21849

Lot No. A304-146A-3

APPLICATIONS	WB, IP
SPECIES REACTIVITY	Mouse
PRESUMED REACTIVITY	Based on 100% sequence identity, this antibody is predicted to react with Rat
AMOUNT	100 µl
CONCENTRATION	1000 µg/ml
STORAGE/SHELF LIFE	2 - 8°C / 1 year from date of receipt
PHYSICAL STATE	Liquid
BUFFER	Tris-citrate/phosphate buffer, pH 7 to 8 containing 0.09% Sodium Azide
ISOTYPE	IgG
ORIGIN	USA
PRODUCTION PROCEDURES	Antibody was affinity purified using an epitope specific to Phospho KAP-1 (S824) immobilized on solid support.

The epitope recognized by A304-146A maps to a region of mouse KAP-1 (tripartite motif-containing 28) surrounding serine 824 using the numbering given in entry NP_035718.2 (Gene ID 21849) when the serine residue is phosphorylated.

Antibody concentration was determined by extinction coefficient: absorbance at 280 nm of 1.4 equals 1.0 mg of IgG.

APPLICATIONS Centrifuge tube to remove product from lid. Optimal working dilutions should be determined experimentally by the investigator. Prepare working dilution immediately before use.

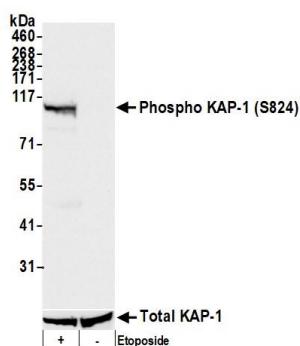
Western Blot 1:2,000 – 1:10,000

Immunoprecipitation 2 – 10 µg/mg lysate

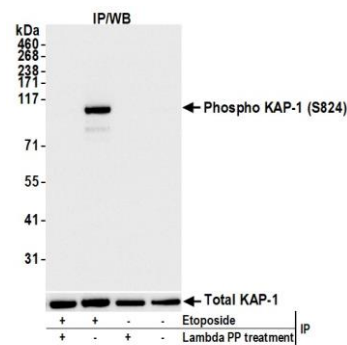
ADDITIONAL INFO <https://www.fortislifesciences.com/p/A304-146A>

Use the link above to view SDS, a current list of citations, and other product specific information.

This document certifies that this product has met all of the quality control standards defined by Bethyl Laboratories, Inc.
Michael Spencer, PhD Date: July 26, 2022



Detection of mouse Phospho KAP-1 (S824) by western blot. *Samples:* Whole cell lysate (10 µg) from BeWo and AlphaTC1 Clone 9 cells prepared using NETN lysis buffer. *Antibody:* Affinity purified rabbit anti-Phospho KAP-1 (S824) antibody A304-146A (lot A304-146A-3) used for WB at 0.1 µg/ml. *Detection:* Chemiluminescence with an exposure time of 1 second.



Detection of mouse Phospho KAP-1 (S824) by western blot of immunoprecipitates. *Samples:* Whole cell lysate (1.0 mg per IP reaction; 20% of IP loaded) from TCMK cells treated with etoposide (+) and/or Lambda PP (+) or mock treated (-). *Antibodies:* Affinity purified rabbit anti- KAP-1 antibody (A304-145A) used for IP at 6 µg per reaction. For blotting immunoprecipitated Phospho KAP-1 (S824), A304-146A lot 3 was used at 0.1 µg/ml. *Detection:* Chemiluminescence with an exposure time of 1 second. Lower Panel: Rabbit anti-KAP-1 antibody (A304-145A).