

SLITRK5 Antibody

Rabbit Polyclonal

Antigen Affinity Purified

Protein ID NP_056382.1

Catalog No. A304-143A

GeneID 26050

Lot No. A304-143A-1



APPLICATIONS WB

SPECIES REACTIVITY Human

PRESUMED REACTIVITY Based on 100% sequence identity, this antibody is predicted to react with Mouse

AMOUNT 100 µl

CONCENTRATION 1000 µg/ml

STORAGE/SHELF LIFE 2 - 8° C / 1 year from date of receipt

PHYSICAL STATE Liquid

BUFFER Tris-citrate/phosphate buffer, pH 7 to 8 containing 0.09% Sodium Azide

ISOTYPE IgG

ORIGIN USA

PRODUCTION PROCEDURES Antibody was affinity purified using an epitope specific to SLITRK5 immobilized on solid support.

The epitope recognized by A304-143A maps to a region between residue 875 to 925 of human SLIT and NTRK-Like Family, Member 5 using the numbering given in entry NP_056382.1 (GeneID 26050).

Antibody concentration was determined by extinction coefficient: absorbance at 280 nm of 1.4 equals 1.0 mg of IgG.

APPLICATIONS

Centrifuge tube to remove product from lid. Optimal working dilutions should be determined experimentally by the investigator. Prepare working dilution immediately before use.

Western Blot 1:1,000 – 1:5,000

Immunoprecipitation Not recommended

APPLICATION NOTES

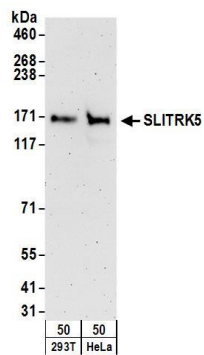
Western blot of lysates performed using standard western blot reagents and 4-8% SDS-PAGE.

ADDITIONAL INFO

<https://www.bethyl.com/product/A304-143A>

Use the link above to view SDS, a current list of citations, and other product specific information.

This document certifies that this product has met all of the quality control standards defined by Bethyl Laboratories, Inc.
Eric McIntush, PhD | Chief Scientific Officer Date: June 21, 2019



Detection of human SLITRK5 by western blot. *Samples:* Whole cell lysate (50 µg) from 293T and HeLa cells.
Antibodies: Affinity purified rabbit anti-SLITRK5 antibody A304-143A (lot A304-143A-1) used for WB at 0.4 µg/ml.
Detection: Chemiluminescence with an exposure time of 3 minutes.