

# GINS4 Antibody

Rabbit Polyclonal

Antigen Affinity Purified

Catalog No. A304-141A

Lot No. A304-141A-1

Protein ID NP\_115712.1

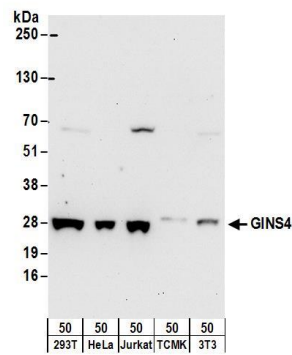
GeneID 84296



|                       |   |              |                 |                     |                 |
|-----------------------|---|--------------|-----------------|---------------------|-----------------|
| APPLICATIONS          | WB  |              |                 |                     |                 |
| SPECIES REACTIVITY    | Human   |              |                 |                     |                 |
| PRESUMED REACTIVITY   | Based on 100% sequence identity, this antibody is predicted to react with Mouse and Rat   |              |                 |                     |                 |
| AMOUNT                | 100 µl  |              |                 |                     |                 |
| CONCENTRATION         | 1000 µg/ml  |              |                 |                     |                 |
| STORAGE/SHELF LIFE    | 2 – 8° C / 1 year from date of receipt  |              |                 |                     |                 |
| PHYSICAL STATE        | Liquid  |              |                 |                     |                 |
| BUFFER                | Tris-citrate/phosphate buffer, pH 7 to 8 containing 0.09% Sodium Azide  |              |                 |                     |                 |
| ISOTYPE               | IgG   |              |                 |                     |                 |
| ORIGIN                | USA   |              |                 |                     |                 |
| PRODUCTION PROCEDURES | <p>Antibody was affinity purified using an epitope specific to GINS4 immobilized on solid support.</p> <p>The epitope recognized by A304-141A maps to a region between residue 173 to 23 of human GINS Complex Subunit 4 using the numbering given in entry NP_115712.1 (GeneID 84296).</p> <p>Antibody concentration was determined by extinction coefficient: absorbance at 280 nm of 1.4 equals 1.0 mg of IgG.</p> |              |                 |                     |                 |
| APPLICATIONS          | <p>Centrifuge tube to remove product from lid. Optimal working dilutions should be determined experimentally by the investigator. Prepare working dilution immediately before use.</p> <table><tr><td>Western Blot</td><td>1:500 – 1:2,500</td></tr><tr><td>Immunoprecipitation</td><td>Not recommended</td></tr></table>   | Western Blot | 1:500 – 1:2,500 | Immunoprecipitation | Not recommended |
| Western Blot          | 1:500 – 1:2,500   |              |                 |                     |                 |
| Immunoprecipitation   | Not recommended   |              |                 |                     |                 |
| APPLICATION NOTES     | Western blot of lysates performed using standard western blot reagents and 4–20% SDS-PAGE.  |              |                 |                     |                 |
| ADDITIONAL INFO       | <p><a href="https://www.bethyl.com/product/A304-141A">https://www.bethyl.com/product/A304-141A</a></p> <p>Use the link above to view SDS, a current list of citations, and other product specific information.</p>  |              |                 |                     |                 |

This document certifies that this product has met all of the quality control standards defined by Bethyl Laboratories, Inc.  
Eric McIntush, PhD | Chief Scientific Officer

Date: June 21, 2019



**Detection of human and mouse GINS4 by western blot.**  
*Samples:* Whole cell lysate (50 µg) from 293T, HeLa, Jurkat, mouse TCMK-1, and mouse NIH 3T3 cells. *Antibodies:* Affinity purified rabbit anti-GINS4 antibody A304-141A (lot A304-141A-1) used for WB at 1 µg/ml. *Detection:* Chemiluminescence with an exposure time of 30 seconds.