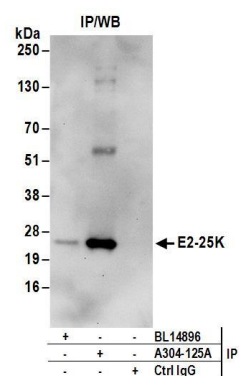


Detection of human and mouse E2-25K by western blot.
Samples: Whole cell lysate (50 μ g) from 293T, HeLa, Jurkat, mouse TCMK-1, and mouse NIH 3T3 cells. *Antibodies:* Affinity purified rabbit anti-E2-25K antibody A304-125A (lot A304-125A-1) used for WB at 0.4 μ g/ml. *Detection:* Chemiluminescence with an exposure time of 10 seconds.



Detection of human E2-25K by western blot of immunoprecipitates. *Samples:* Whole cell lysate (1 mg for IP; 20% of IP loaded) from 293T cells. *Antibodies:* Affinity purified rabbit anti-E2-25K antibody A304-125A (lot A304-125A-1) used for IP at 6 μ g/mg lysate. E2-25K was inefficiently immunoprecipitated by rabbit anti-E2-25K antibody BL14896. For blotting immunoprecipitated E2-25K, A304-125A was used at 0.4 μ g/ml. *Detection:* Chemiluminescence with an exposure time of 30 seconds.