

E2-EPF Antibody

Rabbit Polyclonal

Antigen Affinity Purified

Protein ID NP_055316.2

Catalog No. A304-105A

GeneID 27338

Lot No. A304-105A-1



APPLICATIONS	WB, IP
SPECIES REACTIVITY	Human, Mouse
PRESUMED REACTIVITY	Based on 100% sequence identity, this antibody is predicted to react with Zebrafish, <i>X. laevis</i> , <i>X. tropicalis</i> and Bovine
AMOUNT	100 µl
CONCENTRATION	1000 µg/ml
STORAGE/SHELF LIFE	2 - 8° C / 1 year from date of receipt
PHYSICAL STATE	Liquid
BUFFER	Tris-citrate/phosphate buffer, pH 7 to 8 containing 0.09% Sodium Azide
ISOTYPE	IgG
ORIGIN	USA
PRODUCTION PROCEDURES	Antibody was affinity purified using an epitope specific to E2-EPF immobilized on solid support.

The epitope recognized by A304-105A maps to a region between residue 172 to 222 of human Ubiquitin-Conjugating Enzyme E2S using the numbering given in entry NP_055316.2 (GeneID 27338).

Antibody concentration was determined by extinction coefficient: absorbance at 280 nm of 1.4 equals 1.0 mg of IgG.

APPLICATIONS Centrifuge tube to remove product from lid. Optimal working dilutions should be determined experimentally by the investigator. Prepare working dilution immediately before use.

Western Blot 1:2,000 - 1:10,000

Immunoprecipitation 2 - 10 µg/mg lysate

APPLICATION NOTES Western blot of immunoprecipitates performed using Normal Pig Serum (Cat. No. S100-020), Goat anti-Rabbit Light Chain HRP Conjugate (Cat. No. A120-113P) and 4-20% SDS-PAGE (link to IP-western blot protocol in Additional Info section below).

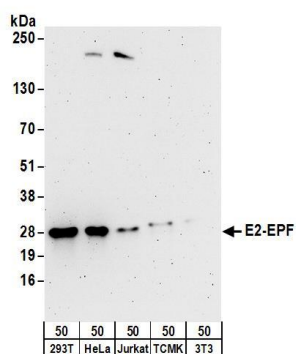
Western blot of lysates performed using standard western blot reagents and 4-20% SDS-PAGE.

ADDITIONAL INFO <https://www.bethyl.com/product/A304-105A>

Use the link above to view SDS, a current list of citations, and other product specific information.

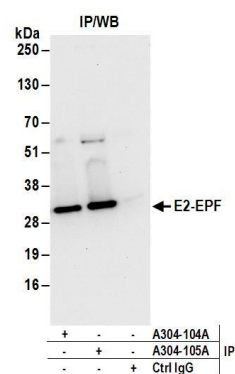
IP-western blot protocol: https://www.bethyl.com/content/protocol_IP_WB

This document certifies that this product has met all of the quality control standards defined by Bethyl Laboratories, Inc.
Eric McIntush, PhD | Chief Scientific Officer Date: June 21, 2019



Detection of human and mouse E2-EPF by western blot.

Samples: Whole cell lysate (50 µg) from 293T, HeLa, Jurkat, mouse TCMK-1, and mouse NIH 3T3 cells. *Antibodies:* Affinity purified rabbit anti-E2-EPF antibody A304-105A (lot A304-105A-1) used for WB at 0.1 µg/ml. *Detection:* Chemiluminescence with an exposure time of 3 minutes.



Detection of human E2-EPF by western blot of immunoprecipitates.

Samples: Whole cell lysate (1 mg for IP; 20% of IP loaded) from 293T cells. *Antibodies:* Affinity purified rabbit anti-E2-EPF antibody A304-105A (lot A304-105A-1) used for IP at 6 µg/mg lysate. E2-EPF was also immunoprecipitated by rabbit anti-E2-EPF antibody A304-104A. For blotting immunoprecipitated E2-EPF, A304-105A was used at 1 µg/ml. *Detection:* Chemiluminescence with an exposure time of 10 seconds.