

# NPL4 Antibody

Rabbit Polyclonal

Antigen Affinity Purified

Protein ID NP\_060391.2

Catalog No. A304-103A

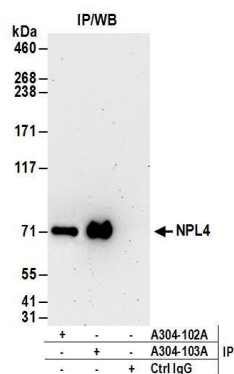
GeneID 55666

Lot No. A304-103A-1



<b>APPLICATIONS</b>	IP
<b>SPECIES REACTIVITY</b>	Human
<b>AMOUNT</b>	100 µl
<b>CONCENTRATION</b>	1000 µg/ml
<b>STORAGE/SHELF LIFE</b>	2 – 8° C / 1 year from date of receipt
<b>PHYSICAL STATE</b>	Liquid
<b>BUFFER</b>	Tris-citrate/phosphate buffer, pH 7 to 8 containing 0.09% Sodium Azide
<b>ISOTYPE</b>	IgG
<b>ORIGIN</b>	USA
<b>PRODUCTION PROCEDURES</b>	<p>Antibody was affinity purified using an epitope specific to NPL4 immobilized on solid support.</p> <p>The epitope recognized by A304-103A maps to a region between residue 525 to 575 of human Nuclear Protein Localization 4 Homolog using the numbering given in entry NP_060391.2 (GeneID 55666).</p> <p>Antibody concentration was determined by extinction coefficient: absorbance at 280 nm of 1.4 equals 1.0 mg of IgG.</p>
<b>APPLICATIONS</b>	<p>Centrifuge tube to remove product from lid. Optimal working dilutions should be determined experimentally by the investigator. Prepare working dilution immediately before use.</p> <p>Western Blot                      Not recommended. Use rabbit anti-NPL4 antibody A304-102A.</p> <p>Immunoprecipitation            2 – 10 µg/mg lysate</p>
<b>APPLICATION NOTES</b>	Western blot of immunoprecipitates performed using Normal Pig Serum (Cat. No. S100-020), Goat anti-Rabbit Light Chain HRP Conjugate (Cat. No. A120-113P) and 4-8% SDS-PAGE (link to IP-western blot protocol in Additional Info section below).
<b>ADDITIONAL INFO</b>	<p><a href="https://www.bethyl.com/product/A304-103A">https://www.bethyl.com/product/A304-103A</a></p> <p>Use the link above to view SDS, a current list of citations, and other product specific information. IP-western blot protocol: <a href="https://www.bethyl.com/content/protocol_IP_WB">https://www.bethyl.com/content/protocol_IP_WB</a></p>

This document certifies that this product has met all of the quality control standards defined by Bethyl Laboratories, Inc.  
Eric McIntush, PhD | Chief Scientific Officer Date: June 21, 2019



**Detection of human NPL4 by western blot of immunoprecipitates.** *Samples:* Whole cell lysate (1 mg for IP; 20% of IP loaded) from 293T cells. *Antibodies:* Affinity purified rabbit anti-NPL4 antibody A304-103A (lot A304-103A-1) used for IP at 6  $\mu\text{g}/\text{mg}$  lysate. NPL4 was also immunoprecipitated by rabbit anti-NPL4 antibody A304-102A. For blotting immunoprecipitated NPL4, A304-102A was used at 0.1  $\mu\text{g}/\text{ml}$ . *Detection:* Chemiluminescence with an exposure time of 3 minutes.