

IDH2 Antibody

Rabbit Polyclonal

Antigen Affinity Purified Protein ID NP_002159.2

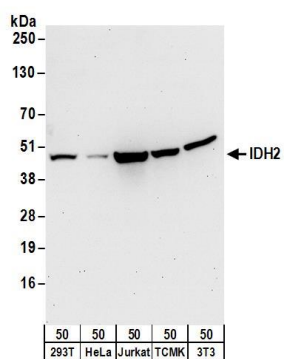
Catalog No. A304-096A GeneID 3418

Lot No. A304-096A-1



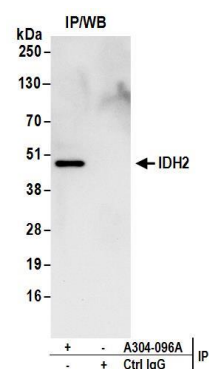
| | | | | | | | | | |
|------------------------------|-------------------------------------------------------------------------------------------------------------------------------------------------------------------------------------------------------------------------------------------------------------------------------------------------------------------------------------------------------------------------------------------------------------------------------------------------------------------------------------------------------------------------------------------------------------------------------------------------------------------------------------------------------------------------------|--------------|-------------------|---------------------|---------------------|----------------------|--------------------------------------------------------------------------------------------------------|--------------------------|----------------------------------------------------------------------------------------------------------------------------------------|
| APPLICATIONS | WB, IP, IHC, ICC-IF | | | | | | | | |
| SPECIES REACTIVITY | Human, Mouse | | | | | | | | |
| PRESUMED REACTIVITY | Based on 100% sequence identity, this antibody is predicted to react with Pig | | | | | | | | |
| AMOUNT | 100 µl | | | | | | | | |
| CONCENTRATION | 1000 µg/ml | | | | | | | | |
| STORAGE/SHELF LIFE | 2 – 8° C / 1 year from date of receipt | | | | | | | | |
| PHYSICAL STATE | Liquid | | | | | | | | |
| BUFFER | Tris-citrate/phosphate buffer, pH 7 to 8 containing 0.09% Sodium Azide | | | | | | | | |
| ISOTYPE | IgG | | | | | | | | |
| ORIGIN | USA | | | | | | | | |
| PRODUCTION PROCEDURES | <p>Antibody was affinity purified using an epitope specific to IDH2 immobilized on solid support.</p> <p>The epitope recognized by A304-096A maps to a region between residue 402 to 452 of human Isocitrate Dehydrogenase 2 (NADP+), Mitochondrial using the numbering given in entry NP_002159.2 (GeneID 3418).</p> <p>Antibody concentration was determined by extinction coefficient: absorbance at 280 nm of 1.4 equals 1.0 mg of IgG.</p> | | | | | | | | |
| APPLICATIONS | <p>Centrifuge tube to remove product from lid. Optimal working dilutions should be determined experimentally by the investigator. Prepare working dilution immediately before use.</p> <table><tr><td>Western Blot</td><td>1:1,000 – 1:5,000</td></tr><tr><td>Immunoprecipitation</td><td>2 – 10 µg/mg lysate</td></tr><tr><td>Immunohistochemistry</td><td>1:500 – 1:2,000. Epitope retrieval with citrate buffer pH 6.0 is recommended for FFPE tissue sections.</td></tr><tr><td>Immunofluorescence (ICC)</td><td>1:500 – 1:2,500. Formaldehyde fixation is recommended. Permeabilization with Triton-X 100 is recommended for formaldehyde-fixed cells.</td></tr></table> | Western Blot | 1:1,000 – 1:5,000 | Immunoprecipitation | 2 – 10 µg/mg lysate | Immunohistochemistry | 1:500 – 1:2,000. Epitope retrieval with citrate buffer pH 6.0 is recommended for FFPE tissue sections. | Immunofluorescence (ICC) | 1:500 – 1:2,500. Formaldehyde fixation is recommended. Permeabilization with Triton-X 100 is recommended for formaldehyde-fixed cells. |
| Western Blot | 1:1,000 – 1:5,000 | | | | | | | | |
| Immunoprecipitation | 2 – 10 µg/mg lysate | | | | | | | | |
| Immunohistochemistry | 1:500 – 1:2,000. Epitope retrieval with citrate buffer pH 6.0 is recommended for FFPE tissue sections. | | | | | | | | |
| Immunofluorescence (ICC) | 1:500 – 1:2,500. Formaldehyde fixation is recommended. Permeabilization with Triton-X 100 is recommended for formaldehyde-fixed cells. | | | | | | | | |
| APPLICATION NOTES | <p>Western blot of immunoprecipitates performed using Normal Pig Serum (Cat. No. S100-020), Goat anti-Rabbit Light Chain HRP Conjugate (Cat. No. A120-113P) and 4-20% SDS-PAGE (link to IP-western blot protocol in Additional Info section below).</p> <p>Western blot of lysates performed using standard western blot reagents and 4-20% SDS-PAGE.</p> | | | | | | | | |
| IHC HUMAN CONTROLS | Breast Carcinoma, Ovarian Carcinoma, HeLa Cells | | | | | | | | |
| IHC MOUSE CONTROLS | Renal Cell Carcinoma | | | | | | | | |
| ADDITIONAL INFO | <p>https://www.bethyl.com/product/A304-096A</p> <p>Use the link above to view SDS, a current list of citations, and other product specific information. IP-western blot protocol: https://www.bethyl.com/content/protocol_IP_WB</p> | | | | | | | | |

This document certifies that this product has met all of the quality control standards defined by Bethyl Laboratories, Inc.
Eric McIntush, PhD | Chief Scientific Officer Date: June 21, 2019



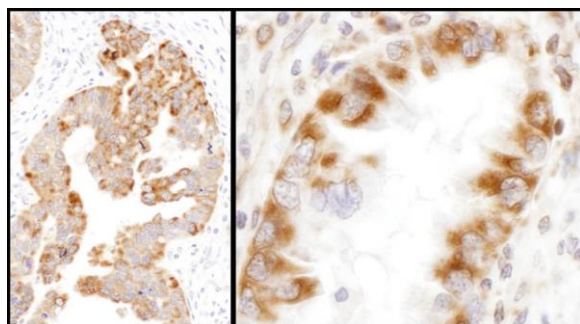
Detection of human and mouse IDH2 by western blot.

Samples: Whole cell lysate (50 µg) from 293T, HeLa, Jurkat, mouse TCMK-1, and mouse NIH 3T3 cells. *Antibodies:* Affinity purified rabbit anti-IDH2 antibody A304-096A (lot A304-096A-1) used for WB at 0.4 µg/ml. *Detection:* Chemiluminescence with an exposure time of 30 seconds.



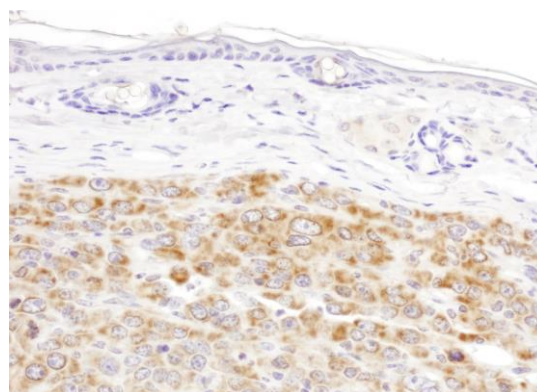
Detection of human IDH2 by western blot of immunoprecipitates.

Samples: Whole cell lysate (1 mg for IP; 20% of IP loaded) from 293T cells. *Antibodies:* Affinity purified rabbit anti-IDH2 antibody A304-096A (lot A304-096A-1) used for IP at 6 µg/mg lysate. For blotting immunoprecipitated IDH2, A304-096A was used at 1 µg/ml. *Detection:* Chemiluminescence with an exposure time of 10 seconds.



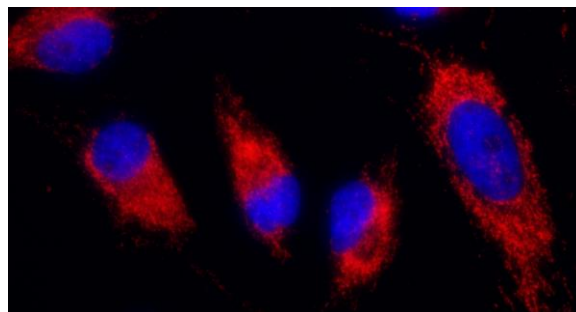
Detection of human IDH2 by immunohistochemistry.

Samples: FFPE sections of human ovarian carcinoma (left) and lung cancer (right). *Antibody:* Affinity purified rabbit anti-IDH2 (Cat. No. A304-096A Lot1) used at a dilution of 1:1,000 (1 µg/ml). *Detection:* DAB



Detection of mouse IDH2 by immunohistochemistry.

Samples: FFPE sections of mouse renal cell carcinoma. *Antibody:* Affinity purified rabbit anti-IDH2 (Cat. No. A304-096A Lot1) used at a dilution of 1:1,000 (1 µg/ml). *Detection:* DAB

**Detection of human IDH2 by immunocytochemistry.**

Sample: Formaldehyde-fixed asynchronous HeLa cells.

Antibody: Affinity purified rabbit anti-IDH2 (Cat. No. A304-096A Lot1) used at a dilution of 1:1,000 (1 µg/ml).

Detection: Red-fluorescent goat anti-rabbit IgG-heavy and light chain cross-adsorbed Antibody DyLight® 594 Conjugated used at a dilution of 1:100.