

# WVOX Antibody

Rabbit Polyclonal

Antigen Affinity Purified

Protein ID P\_057457.1

Catalog No. A304-079A

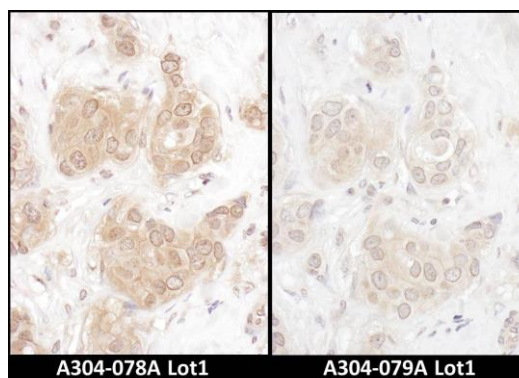
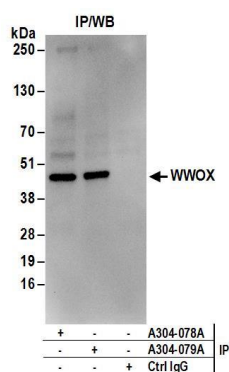
GeneID 51741

Lot No. A304-079A-1



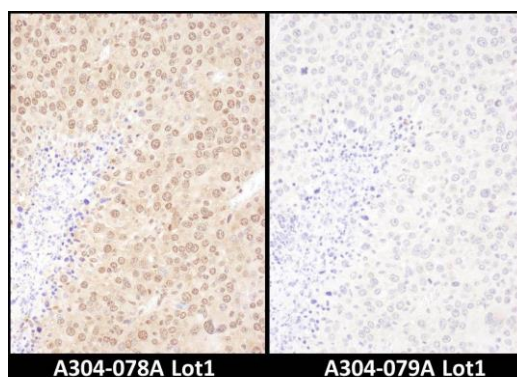
<b>APPLICATIONS</b>	IP, IHC						
<b>SPECIES REACTIVITY</b>	Human						
<b>PRESUMED REACTIVITY</b>	Based on 100% sequence identity, this antibody is predicted to react with Orangutan						
<b>AMOUNT</b>	100 µl						
<b>CONCENTRATION</b>	1000 µg/ml						
<b>STORAGE/SHELF LIFE</b>	2 - 8° C / 1 year from date of receipt						
<b>PHYSICAL STATE</b>	Liquid						
<b>BUFFER</b>	Tris-citrate/phosphate buffer, pH 7 to 8 containing 0.09% Sodium Azide						
<b>ISOTYPE</b>	IgG						
<b>ORIGIN</b>	USA						
<b>PRODUCTION PROCEDURES</b>	<p>Antibody was affinity purified using an epitope specific to WVOX immobilized on solid support.</p> <p>The epitope recognized by A304-079A maps to a region between residue 364 to 414 of human WW Domain Containing Oxidoreductase using the numbering given in entry P_057457.1 (GeneID 51741).</p> <p>Antibody concentration was determined by extinction coefficient: absorbance at 280 nm of 1.4 equals 1.0 mg of IgG.</p>						
<b>APPLICATIONS</b>	<p>Centrifuge tube to remove product from lid. Optimal working dilutions should be determined experimentally by the investigator. Prepare working dilution immediately before use.</p> <table><tr><td>Western Blot</td><td>Not recommended. A304-079A has not performed satisfactorily when used for WB of WVOX in crude preparations (e.g. whole cell lysate). This antibody can be used for WB of enriched (e.g. immunoprecipitated) sources of WVOX.</td></tr><tr><td>Immunoprecipitation</td><td>2 - 10 µg/mg lysate</td></tr><tr><td>Immunohistochemistry</td><td>1:500 - 1:2,000. Epitope retrieval with citrate buffer pH 6.0 is recommended for FFPE tissue sections.</td></tr></table>	Western Blot	Not recommended. A304-079A has not performed satisfactorily when used for WB of WVOX in crude preparations (e.g. whole cell lysate). This antibody can be used for WB of enriched (e.g. immunoprecipitated) sources of WVOX.	Immunoprecipitation	2 - 10 µg/mg lysate	Immunohistochemistry	1:500 - 1:2,000. Epitope retrieval with citrate buffer pH 6.0 is recommended for FFPE tissue sections.
Western Blot	Not recommended. A304-079A has not performed satisfactorily when used for WB of WVOX in crude preparations (e.g. whole cell lysate). This antibody can be used for WB of enriched (e.g. immunoprecipitated) sources of WVOX.						
Immunoprecipitation	2 - 10 µg/mg lysate						
Immunohistochemistry	1:500 - 1:2,000. Epitope retrieval with citrate buffer pH 6.0 is recommended for FFPE tissue sections.						
<b>APPLICATION NOTES</b>	Western blot of immunoprecipitates performed using Normal Pig Serum (Cat. No. S100-020), Goat anti-Rabbit Light Chain HRP Conjugate (Cat. No. A120-113P) and 4-20% SDS-PAGE (link to IP-western blot protocol in Additional Info section below).						
<b>IHC HUMAN CONTROLS</b>	Breast Carcinoma, Ovarian Carcinoma						
<b>ADDITIONAL INFO</b>	<p><a href="https://www.bethyl.com/product/A304-079A">https://www.bethyl.com/product/A304-079A</a></p> <p>Use the link above to view SDS, a current list of citations, and other product specific information.</p> <p>IP-western blot protocol: <a href="https://www.bethyl.com/content/protocol_IP_WB">https://www.bethyl.com/content/protocol_IP_WB</a></p>						

This document certifies that this product has met all of the quality control standards defined by Bethyl Laboratories, Inc.  
Eric McIntush, PhD | Chief Scientific Officer Date: June 21, 2019



**Detection of human WWOX by western blot of immunoprecipitates.** *Samples:* Whole cell lysate (1 mg for IP; 20% of IP loaded) from Jurkat cells. *Antibodies:* Affinity purified rabbit anti-WWOX antibody A304-079A (lot A304-079A-1) used for IP at 6 µg/mg lysate. WWOX was also immunoprecipitated by rabbit anti-WWOX antibody A304-078A. For blotting immunoprecipitated WWOX, A304-078A was used at 0.4 µg/ml. *Detection:* Chemiluminescence with an exposure time of 10 seconds.

**Detection of human WWOX by immunohistochemistry.** *Samples:* FFPE serial sections of human breast carcinoma. *Antibody:* Affinity purified rabbit anti-WWOX (Cat. No. A304-078A Lot1, left image and Cat. No. A304-079A Lot1, right image) used at a dilution of 1:1,000 (1 µg/ml). *Detection:* DAB. *Counterstain:* Hematoxylin (blue).



**Detection of mouse WWOX by immunohistochemistry.** *Samples:* FFPE serial sections of mouse renal cell carcinoma. *Antibody:* Affinity purified rabbit anti-WWOX (Cat. No. A304-078A Lot1, left image and Cat. No. A304-079A Lot1, right image) used at a dilution of 1:1,000 (1 µg/ml). *Detection:* DAB