

# HNF1-alpha Antibody

Rabbit Polyclonal

Antigen Affinity Purified

Protein ID NP\_000536.5

Catalog No. A304-054A

GeneID 6927

Lot No. A304-054A-1



<b>APPLICATIONS</b>	IP, IHC
<b>SPECIES REACTIVITY</b>	Human
<b>PRESUMED REACTIVITY</b>	Based on 100% sequence identity, this antibody is predicted to react with Mouse and Rat
<b>AMOUNT</b>	100 µl
<b>CONCENTRATION</b>	1000 µg/ml
<b>STORAGE/SHELF LIFE</b>	2 - 8° C / 1 year from date of receipt
<b>PHYSICAL STATE</b>	Liquid
<b>BUFFER</b>	Tris-citrate/phosphate buffer, pH 7 to 8 containing 0.09% Sodium Azide
<b>ISOTYPE</b>	IgG
<b>ORIGIN</b>	USA
<b>PRODUCTION PROCEDURES</b>	Antibody was affinity purified using an epitope specific to HNF1-alpha immobilized on solid support.

The epitope recognized by A304-054A maps to a region between residue 581 to 631 of human HNF1 Homeobox A using the numbering given in entry NP\_000536.5 (GeneID 6927).

Antibody concentration was determined by extinction coefficient: absorbance at 280 nm of 1.4 equals 1.0 mg of IgG.

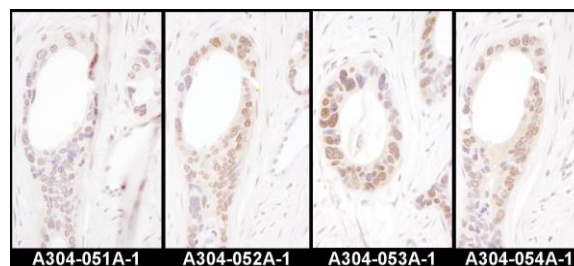
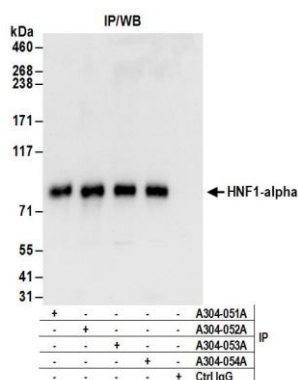
<b>APPLICATIONS</b>	Centrifuge tube to remove product from lid. Optimal working dilutions should be determined experimentally by the investigator. Prepare working dilution immediately before use.
	Western Blot Not recommended. Use rabbit anti-HNF1-alpha antibody A304-053A.
	Immunoprecipitation 2 - 10 µg/mg lysate
	Immunohistochemistry 1:1,000 - 1:5,000. Epitope retrieval with citrate buffer pH 6.0 is recommended for FFPE tissue sections.

**APPLICATION NOTES** Western blot of immunoprecipitates performed using Normal Pig Serum (Cat. No. S100-020), Goat anti-Rabbit Light Chain HRP Conjugate (Cat. No. A120-113P) and 4-8% SDS-PAGE (link to IP-western blot protocol in Additional Info section below).

**IHC HUMAN CONTROLS** Breast Carcinoma, Ovarian Carcinoma, Prostate Carcinoma

**ADDITIONAL INFO** <https://www.bethyl.com/product/A304-054A>  
Use the link above to view SDS, a current list of citations, and other product specific information.  
IP-western blot protocol: [https://www.bethyl.com/content/protocol\\_IP\\_WB](https://www.bethyl.com/content/protocol_IP_WB)

This document certifies that this product has met all of the quality control standards defined by Bethyl Laboratories, Inc.  
Eric McIntush, PhD | Chief Scientific Officer Date: June 21, 2019



**Detection of human HNF1-alpha by western blot of immunoprecipitates.** *Samples:* Whole cell lysate (1 mg for IP; 20% of IP loaded) from Hep G2 cells. *Antibodies:* Affinity purified rabbit anti-HNF1-alpha antibody A304-054A (lot A304-054A-1) used for IP at 6 µg/mg lysate. HNF1-alpha was also immunoprecipitated by rabbit anti-HNF1-alpha antibodies A304-051A, A304-052A, and A304-053A. For blotting immunoprecipitated HNF1-alpha, A304-053A was used at 1 µg/ml. *Detection:* Chemiluminescence with an exposure time of 3 seconds.

**Detection of human HNF1-alpha by immunohistochemistry.** *Samples:* FFPE serial sections of human ovarian carcinoma. *Antibody:* Affinity purified rabbit anti-HNF1-alpha (Cat. No. A304-051A Lot1, A304-052A Lot1, A304-053A Lot1, and A304-054A Lot1) used at a dilution of 1:5,000 (0.2µg/ml). *Detection:* DAB. *Counterstain:* Hematoxylin (blue).