

HNF1- α Antibody

Rabbit Polyclonal

Antigen Affinity Purified

Protein ID NP_000536.5

Catalog No. A304-053A

GeneID 6927

Lot No. A304-053A-1



APPLICATIONS WB, IP, IHC

SPECIES REACTIVITY Human

AMOUNT 100 μ l

CONCENTRATION 1000 μ g/ml

STORAGE/SHELF LIFE 2 – 8° C / 1 year from date of receipt

PHYSICAL STATE Liquid

BUFFER Tris-citrate/phosphate buffer, pH 7 to 8 containing 0.09% Sodium Azide

ISOTYPE IgG

ORIGIN USA

PRODUCTION PROCEDURES Antibody was affinity purified using an epitope specific to HNF1- α immobilized on solid support.

The epitope recognized by A304-053A maps to a region between residue 550 to 600 of human HNF1 Homeobox A using the numbering given in entry NP_000536.5 (GeneID 6927).

Antibody concentration was determined by extinction coefficient: absorbance at 280 nm of 1.4 equals 1.0 mg of IgG.

APPLICATIONS Centrifuge tube to remove product from lid. Optimal working dilutions should be determined experimentally by the investigator. Prepare working dilution immediately before use.

Western Blot 1:2,000 – 1:10,000

Immunoprecipitation 2 – 10 μ g/mg lysate

Immunohistochemistry 1:1,000 – 1:5,000. Epitope retrieval with citrate buffer pH 6.0 is recommended for FFPE tissue sections.

APPLICATION NOTES Western blot of immunoprecipitates performed using Normal Pig Serum (Cat. No. S100-020), Goat anti-Rabbit Light Chain HRP Conjugate (Cat. No. A120-113P) and 4-8% SDS-PAGE (link to IP-western blot protocol in Additional Info section below).

Western blot of lysates performed using standard western blot reagents and 4-8% SDS-PAGE.

IHC HUMAN CONTROLS Breast Carcinoma, Ovarian Carcinoma, Prostate Carcinoma

ADDITIONAL INFO <https://www.bethyl.com/product/A304-053A>

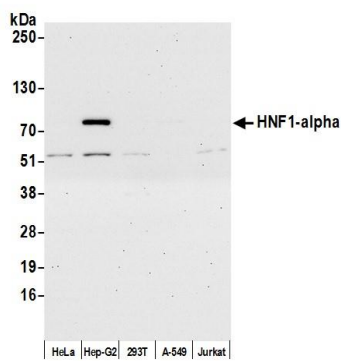
Use the link above to view SDS, a current list of citations, and other product specific information.

IP-western blot protocol https://www.bethyl.com/content/protocol_IP_WB

This document certifies that this product has met all of the quality control standards defined by Bethyl Laboratories, Inc.

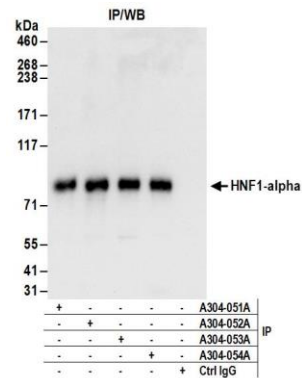
Eric McIntush, PhD | Chief Scientific Officer

Date: November 27, 2019

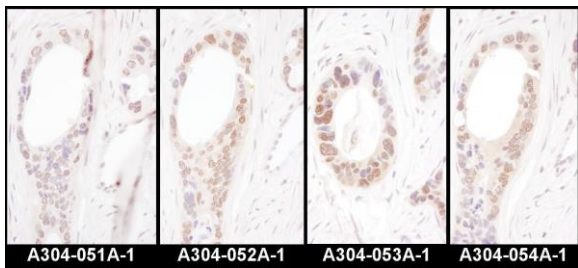


Detection of human HNF1-alpha by western blot.

Samples: Whole cell lysate (15 µg) from HeLa, Hep-G2, HEK293T, A-549, and Jurkat cells prepared using NETN lysis buffer. *Antibody:* Affinity purified rabbit anti-HNF1-alpha antibody A304-054A (lot A304-054A-1) used for WB at 0.1 µg/ml. *Detection:* Chemiluminescence with an exposure time of 30 seconds.



Detection of human HNF1-alpha by western blot of immunoprecipitates. *Samples:* Whole cell lysate (1 mg for IP; 20% of IP loaded) from Hep G2 cells. *Antibodies:* Affinity purified rabbit anti-HNF1-alpha antibody A304-053A (lot A304-053A-1) used for IP at 6 µg/mg lysate. HNF1-alpha was also immunoprecipitated by rabbit anti-HNF1-alpha antibodies A304-051A, A304-052A, and A304-054A. For blotting immunoprecipitated HNF1-alpha, A304-053A was used at 1 µg/ml. *Detection:* Chemiluminescence with an exposure time of 3 seconds.



Detection of human HNF1-alpha by immunohistochemistry. *Samples:* FFPE serial sections of human ovarian carcinoma. *Antibody:* Affinity purified rabbit anti- HNF1-alpha (Cat. No. A304-051A Lot1, A304-052A Lot1, A304-053A Lot1, and A304-054A Lot1) used at a dilution of 1:5,000 (0.2µg/ml). *Detection:* DAB