

# HNF1- $\alpha$ Antibody

Rabbit Polyclonal

Antigen Affinity Purified

Protein ID NP\_000536.5

Catalog No. A304-052A

GeneID 6927

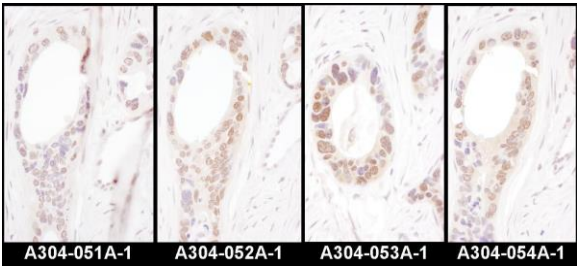
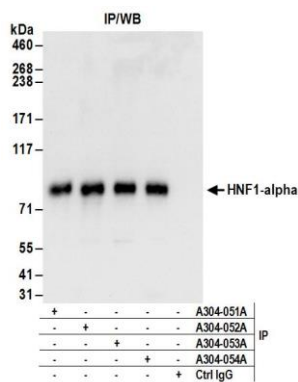
Lot No. A304-052A-1



<b>APPLICATIONS</b>	IP, IHC						
<b>SPECIES REACTIVITY</b>	Human						
<b>PRESUMED REACTIVITY</b>	Based on 100% sequence identity, this antibody is predicted to react with Mouse and Rat						
<b>AMOUNT</b>	100 $\mu$ l						
<b>CONCENTRATION</b>	1000 $\mu$ g/ml						
<b>STORAGE/SHELF LIFE</b>	2 – 8° C / 1 year from date of receipt						
<b>PHYSICAL STATE</b>	Liquid						
<b>BUFFER</b>	Tris-citrate/phosphate buffer, pH 7 to 8 containing 0.09% Sodium Azide						
<b>ISOTYPE</b>	IgG						
<b>ORIGIN</b>	USA						
<b>PRODUCTION PROCEDURES</b>	<p>Antibody was affinity purified using an epitope specific to HNF1-<math>\alpha</math> immobilized on solid support.</p> <p>The epitope recognized by A304-052A maps to a region between residue 475 to 525 of human HNF1 Homeobox A using the numbering given in entry NP_000536.5 (GeneID 6927).</p> <p>Antibody concentration was determined by extinction coefficient: absorbance at 280 nm of 1.4 equals 1.0 mg of IgG.</p>						
<b>APPLICATIONS</b>	<p>Centrifuge tube to remove product from lid. Optimal working dilutions should be determined experimentally by the investigator. Prepare working dilution immediately before use.</p> <table><tr><td>Western Blot</td><td>Not recommended. Use rabbit anti-HNF1-<math>\alpha</math> antibody A304-053A.</td></tr><tr><td>Immunoprecipitation</td><td>2 – 10 <math>\mu</math>g/mg lysate</td></tr><tr><td>Immunohistochemistry</td><td>1:1,000 – 1:5,000. Epitope retrieval with citrate buffer pH 6.0 is recommended for FFPE tissue sections.</td></tr></table>	Western Blot	Not recommended. Use rabbit anti-HNF1- $\alpha$ antibody A304-053A.	Immunoprecipitation	2 – 10 $\mu$ g/mg lysate	Immunohistochemistry	1:1,000 – 1:5,000. Epitope retrieval with citrate buffer pH 6.0 is recommended for FFPE tissue sections.
Western Blot	Not recommended. Use rabbit anti-HNF1- $\alpha$ antibody A304-053A.						
Immunoprecipitation	2 – 10 $\mu$ g/mg lysate						
Immunohistochemistry	1:1,000 – 1:5,000. Epitope retrieval with citrate buffer pH 6.0 is recommended for FFPE tissue sections.						
<b>APPLICATION NOTES</b>	Western blot of immunoprecipitates performed using Normal Pig Serum (Cat. No. S100-020), Goat anti-Rabbit Light Chain HRP Conjugate (Cat. No. A120-113P) and 4-8% SDS-PAGE (link to IP-western blot protocol in Additional Info section below).						
<b>IHC HUMAN CONTROLS</b>	Breast Carcinoma, Ovarian Carcinoma, Prostate Carcinoma						
<b>ADDITIONAL INFO</b>	<p><a href="https://www.bethyl.com/product/A304-052A">https://www.bethyl.com/product/A304-052A</a></p> <p>Use the link above to view SDS, a current list of citations, and other product specific information.</p> <p>IP-western blot protocol: <a href="https://www.bethyl.com/content/protocol_IP_WB">https://www.bethyl.com/content/protocol_IP_WB</a></p>						

This document certifies that this product has met all of the quality control standards defined by Bethyl Laboratories, Inc.  
Eric McIntush, PhD | Chief Scientific Officer

Date: June 21, 2019



**Detection of human HNF1- $\alpha$  by western blot of immunoprecipitates.** *Samples:* Whole cell lysate (1 mg for IP; 20% of IP loaded) from Hep G2 cells. *Antibodies:* Affinity purified rabbit anti-HNF1- $\alpha$  antibody A304-052A (lot A304-052A-1) used for IP at 6  $\mu$ g/mg lysate. HNF1- $\alpha$  was also immunoprecipitated by rabbit anti-HNF1- $\alpha$  antibodies A304-051A, A304-053A, and A304-054A. For blotting immunoprecipitated HNF1- $\alpha$ , A304-053A was used at 1  $\mu$ g/ml. *Detection:* Chemiluminescence with an exposure time of 3 seconds.

**Detection of human HNF1- $\alpha$  by immunohistochemistry.** *Samples:* FFPE serial sections of human ovarian carcinoma. *Antibody:* Affinity purified rabbit anti- HNF1- $\alpha$  (Cat. No. A304-051A Lot1, A304-052A Lot1, A304-053A Lot1, and A304-054A Lot1) used at a dilution of 1:5,000 (0.2 $\mu$ g/ml). *Detection:* DAB. *Counterstain:* Hematoxylin (blue).