

EDF-1 Antibody

Rabbit Polyclonal

Antigen Affinity Purified

Protein ID NP_003783.1

Catalog No. A304-039A

GeneID 8721

Lot No. A304-039A-1



APPLICATIONS	WB, IP, IHC
SPECIES REACTIVITY	Human
PRESUMED REACTIVITY	Based on 100% sequence identity, this antibody is predicted to react with Bovine
AMOUNT	100 µl
CONCENTRATION	1000 µg/ml
STORAGE/SHELF LIFE	2 - 8° C / 1 year from date of receipt
PHYSICAL STATE	Liquid
BUFFER	Tris-citrate/phosphate buffer, pH 7 to 8 containing 0.09% Sodium Azide
ISOTYPE	IgG
ORIGIN	USA
PRODUCTION PROCEDURES	Antibody was affinity purified using an epitope specific to EDF-1 immobilized on solid support.

The epitope recognized by A304-039A maps to a region between residue 98 to 148 of human Endothelial Differentiation-Related Factor 1 using the numbering given in entry NP_003783.1 (GeneID 8721).

Antibody concentration was determined by extinction coefficient: absorbance at 280 nm of 1.4 equals 1.0 mg of IgG.

APPLICATIONS Centrifuge tube to remove product from lid. Optimal working dilutions should be determined experimentally by the investigator. Prepare working dilution immediately before use.

Western Blot 1:2,000 - 1:10,000

Immunoprecipitation 2 - 10 µg/mg lysate

Immunohistochemistry 1:500 - 1:2,000. Epitope retrieval with citrate buffer pH 6.0 is recommended for FFPE tissue sections.

APPLICATION NOTES Western blot of immunoprecipitates performed using Normal Pig Serum (Cat. No. S100-020), Goat anti-Rabbit Light Chain HRP Conjugate (Cat. No. A120-113P) and 4-12% SDS-PAGE (link to IP-western blot protocol in Additional Info section below).

Western blot of lysates performed using standard western blot reagents and 4-12% SDS-PAGE.

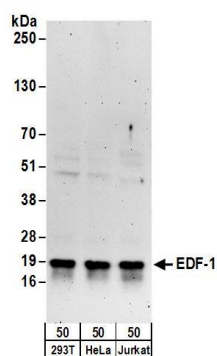
IHC HUMAN CONTROLS Breast Carcinoma, Ovarian Carcinoma

ADDITIONAL INFO <https://www.bethyl.com/product/A304-039A>

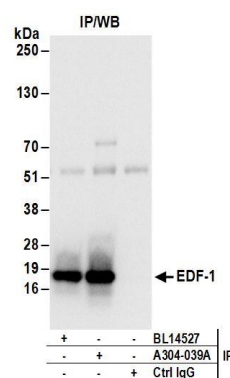
Use the link above to view SDS, a current list of citations, and other product specific information.

IP-western blot protocol: https://www.bethyl.com/content/protocol_IP_WB

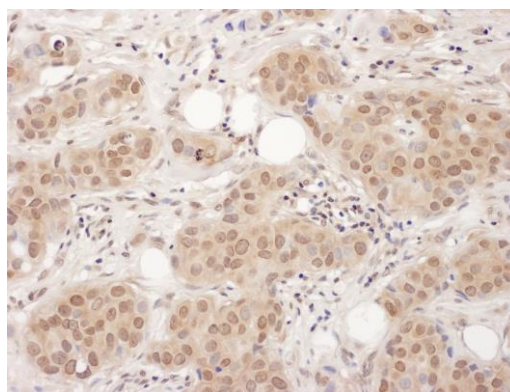
This document certifies that this product has met all of the quality control standards defined by Bethyl Laboratories, Inc.
Eric McIntush, PhD | Chief Scientific Officer Date: June 21, 2019



Detection of human EDF-1 by western blot. *Samples:* Whole cell lysate (50 μ g) from HEK293T, HeLa, and Jurkat cells. *Antibodies:* Affinity purified rabbit anti-EDF-1 antibody A304-039A (lot A304-039A-1) used for WB at 0.1 μ g/ml. *Detection:* Chemiluminescence with an exposure time of 3 minutes.



Detection of human EDF-1 by western blot of immunoprecipitates. *Samples:* Whole cell lysate (1 mg for IP; 20% of IP loaded) from HEK293T cells. *Antibodies:* Affinity purified rabbit anti-EDF-1 antibody A304-039A (lot A304-039A-1) used for IP at 6 μ g/mg lysate. EDF-1 was also immunoprecipitated by rabbit anti-EDF-1 antibody BL14527. For blotting immunoprecipitated EDF-1, A304-039A was used at 1 μ g/ml. *Detection:* Chemiluminescence with an exposure time of 3 seconds.



Detection of human EDF-1 by immunohistochemistry.
Sample: FFPE section of human breast carcinoma.
Antibody: Affinity purified rabbit anti- EDF-1 (Cat. No. A304-039A Lot1) used at a dilution of 1:1,000 (1 μ g/ml).
Detection: DAB