

RPS14 Antibody

Rabbit Polyclonal

Antigen Affinity Purified

Protein ID NP_001020242.1

Catalog No. A304-031A

GeneID 6208

Lot No. A304-031A-1



| | |
|------------------------------|---|
| APPLICATIONS | WB, IP |
| SPECIES REACTIVITY | Human, Mouse |
| PRESUMED REACTIVITY | Based on 100% sequence identity, this antibody is predicted to react with Rat and D. melanogaster |
| AMOUNT | 100 µl |
| CONCENTRATION | 1000 µg/ml |
| STORAGE/SHELF LIFE | 2 – 8° C / 1 year from date of receipt |
| PHYSICAL STATE | Liquid |
| BUFFER | Tris-citrate/phosphate buffer, pH 7 to 8 containing 0.09% Sodium Azide |
| ISOTYPE | IgG |
| ORIGIN | USA |
| PRODUCTION PROCEDURES | Antibody was affinity purified using an epitope specific to RPS14 immobilized on solid support. |

The epitope recognized by A304-031A maps to a region between residue 101 to 151 of human Ribosomal Protein S14 using the numbering given in entry NP_001020242.1 (GeneID 6208).

Antibody concentration was determined by extinction coefficient: absorbance at 280 nm of 1.4 equals 1.0 mg of IgG.

APPLICATIONS Centrifuge tube to remove product from lid. Optimal working dilutions should be determined experimentally by the investigator. Prepare working dilution immediately before use.

Western Blot 1:2,000 – 1:10,000

Immunoprecipitation 2 – 10 µg/mg lysate

APPLICATION NOTES Western blot of immunoprecipitates performed using Normal Pig Serum (Cat. No. S100-020), Goat anti-Rabbit Light Chain HRP Conjugate (Cat. No. A120-113P) and 4-12% SDS-PAGE (link to IP-western blot protocol in Additional Info section below).

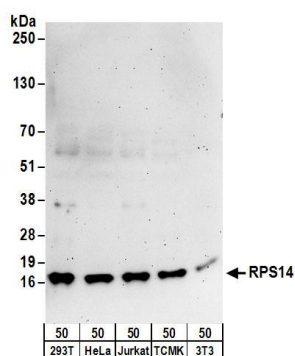
Western blot of lysates performed using standard western blot reagents and 4-12% SDS-PAGE.

ADDITIONAL INFO <https://www.bethyl.com/product/A304-031A>

Use the link above to view SDS, a current list of citations, and other product specific information.

IP-western blot protocol: https://www.bethyl.com/content/protocol_IP_WB

This document certifies that this product has met all of the quality control standards defined by Bethyl Laboratories, Inc.
Eric McIntush, PhD | Chief Scientific Officer Date: June 21, 2019

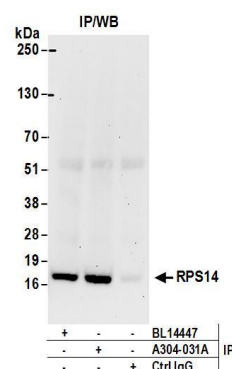


Detection of human and mouse RPS14 by western blot.

Samples: Whole cell lysate (50 µg) from HEK293T, HeLa, Jurkat, mouse TCMK-1, and mouse NIH 3T3 cells.

Antibodies: Affinity purified rabbit anti-RPS14 antibody A304-031A (lot A304-031A-1) used for WB at 0.1 µg/ml.

Detection: Chemiluminescence with an exposure time of 3 minutes.



Detection of human RPS14 by western blot of immunoprecipitates.

Samples: Whole cell lysate (1 mg for IP; 20% of IP loaded) from HEK293T cells.

Antibodies: Affinity purified rabbit anti-RPS14 antibody A304-031A (lot A304-031A-1) used for IP at 6 µg/mg lysate. RPS14

was also immunoprecipitated by rabbit anti-RPS14 antibody BL14447. For blotting immunoprecipitated RPS14,

A304-031A was used at 1 µg/ml. **Detection:** Chemiluminescence with an exposure time of 10 seconds.