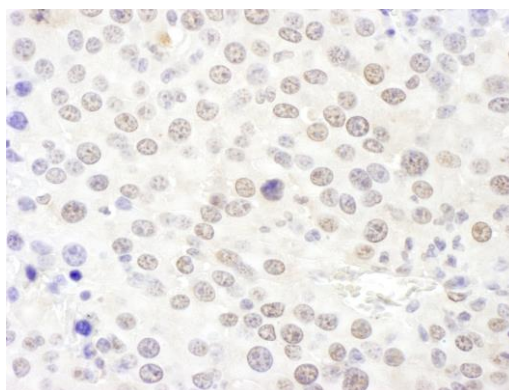


Detection of human NHP2L1 by western blot of immunoprecipitates. *Samples:* Whole cell lysate (1 mg for IP; 20% of IP loaded) from HeLa cells. *Antibodies:* Affinity purified rabbit anti-NHP2L1 antibody A304-030A (lot A304-030A-1) used for IP at 6 µg/mg lysate. NHP2L1 was also immunoprecipitated by rabbit anti-NHP2L1 antibody BL14339. For blotting immunoprecipitated NHP2L1, A304-030A was used at 1 µg/ml. *Detection:* Chemiluminescence with an exposure time of 3 minutes.

Detection of human NHP2L1 by immunohistochemistry. *Sample:* FFPE section of human ovarian carcinoma. *Antibody:* Affinity purified rabbit anti-NHP2L1 (Cat. No. A304-030A Lot1) used at a dilution of 1:1,000 (1 µg/ml). *Detection:* DAB. *Counterstain:* IHC Hematoxylin (blue).



Detection of mouse NHP2L1 by immunohistochemistry. *Sample:* FFPE section of mouse renal cell carcinoma. *Antibody:* Affinity purified rabbit anti-NHP2L1 (Cat. No. A304-030A Lot1) used at a dilution of 1:1,000 (1 µg/ml). *Detection:* DAB