

IRF8 Antibody

Rabbit Polyclonal

Antigen Affinity Purified

Protein ID NP_032346.1

Catalog No. A304-027A

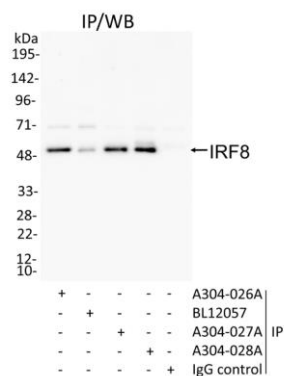
GeneID 15900

Lot No. A304-027A-1

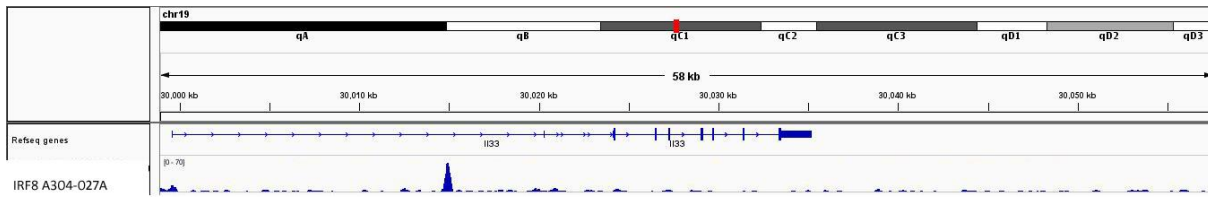


APPLICATIONS	IP, ChIP-Seq						
SPECIES REACTIVITY	Mouse						
AMOUNT	100 µl						
CONCENTRATION	1000 µg/ml						
STORAGE/SHELF LIFE	2 - 8° C / 1 year from date of receipt						
PHYSICAL STATE	Liquid						
BUFFER	Tris-citrate/phosphate buffer, pH 7 to 8 containing 0.09% Sodium Azide						
ISOTYPE	IgG						
ORIGIN	USA						
PRODUCTION PROCEDURES	<p>Antibody was affinity purified using an epitope specific to IRF8 immobilized on solid support.</p> <p>The epitope recognized by A304-027A maps to a region between residue 200 and 250 of mouse Interferon Regulatory Factor 8 using the numbering given in entry NP_032346.1 (GeneID 15900).</p> <p>Antibody concentration was determined by extinction coefficient: absorbance at 280 nm of 1.4 equals 1.0 mg of IgG.</p>						
APPLICATIONS	<p>Centrifuge tube to remove product from lid. Optimal working dilutions should be determined experimentally by the investigator. Prepare working dilution immediately before use.</p> <table><tr><td>Western Blot</td><td>Not recommended</td></tr><tr><td>Immunoprecipitation</td><td>2 - 10 µg/mg lysate</td></tr><tr><td>ChIP-Seq</td><td>ChIP-Seq 10 µg/75 µl protein G beads (according to Blecher-Gonen, R. et al.; Nat Protoc. 2013 Mar; 8(3):539-54)</td></tr></table>	Western Blot	Not recommended	Immunoprecipitation	2 - 10 µg/mg lysate	ChIP-Seq	ChIP-Seq 10 µg/75 µl protein G beads (according to Blecher-Gonen, R. et al.; Nat Protoc. 2013 Mar; 8(3):539-54)
Western Blot	Not recommended						
Immunoprecipitation	2 - 10 µg/mg lysate						
ChIP-Seq	ChIP-Seq 10 µg/75 µl protein G beads (according to Blecher-Gonen, R. et al.; Nat Protoc. 2013 Mar; 8(3):539-54)						
APPLICATION NOTES	Western blot of immunoprecipitates performed using Normal Pig Serum (Cat. No. S100-020), Goat anti-Rabbit Light Chain HRP Conjugate (Cat. No. A120-113P) and 4-20% SDS-PAGE (link to IP-western blot protocol in Additional Info section below).						
ADDITIONAL INFO	<p>https://www.bethyl.com/product/A304-027A</p> <p>Use the link above to view SDS, a current list of citations, and other product specific information. IP-western blot protocol: https://www.bethyl.com/content/protocol_IP_WB</p>						

This document certifies that this product has met all of the quality control standards defined by Bethyl Laboratories, Inc.
Eric McIntush, PhD | Chief Scientific Officer Date: June 21, 2019



Detection of mouse IRF8 by western blot of immunoprecipitates. *Samples:* Whole cell lysate (0.5 mg for IP, 20% of IP loaded) from RAW 264.7 cells. *Antibodies:* Affinity purified rabbit anti-IRF8 antibody A304-027A (lot A304-027A-1) used for IP at 6 μ g/mg lysate. IRF8 was also immunoprecipitated by rabbit anti-IRF8 antibodies BL12057, A304-026A and A304-028A. For blotting immunoprecipitated IRF8, A304-028A was used at 1 μ g/ml. *Detection:* Chemiluminescence with an exposure time of 30 seconds.



Localization of IRF8 binding sites by ChIP-Sequencing. Chromatin from mouse bone marrow dendritic cells (BMDCs) was immunoprecipitated with anti-IRF8 A304-027A (lot A304-027A -1) and analyzed by DNA sequencing according to methods available at <http://www.weizmann.ac.il/immunology/AmitLab/data-and-method/iChIP/method>. The figure illustrates the peak distribution of IRF8 binding within a 156 kb region of chromosome 19 (blue) as detected by anti-IRF8 A304-027A.