

# PoID1 Antibody

Rabbit Polyclonal

Antigen Affinity Purified Protein ID NP\_002682.2  
Catalog No. A304-007A GeneID 5424  
Lot No. A304-007A-2



**APPLICATIONS** WB, IP  
**SPECIES REACTIVITY** Human, Mouse  
**PRESUMED REACTIVITY** Based on 100% sequence identity, this antibody is predicted to react with Rat, Bovine and Golden hamster  
**AMOUNT** 100 µl  
**CONCENTRATION** 1000 µg/ml  
**STORAGE/SHELF LIFE** 2 - 8° C / 1 year from date of receipt  
**PHYSICAL STATE** Liquid  
**BUFFER** Tris-citrate/phosphate buffer, pH 7 to 8 containing 0.09% Sodium Azide  
**ISOTYPE** IgG  
**ORIGIN** USA  
**PRODUCTION PROCEDURES** Antibody was affinity purified using an epitope specific to PoID1 immobilized on solid support.

The epitope recognized by A304-007A maps to a region between residue 930 to 980 of human Polymerase (DNA directed), Delta 1, Catalytic Subunit 125kDa using the numbering given in entry NP\_002682.2 (GeneID 5424).

Antibody concentration was determined by extinction coefficient: absorbance at 280 nm of 1.4 equals 1.0 mg of IgG.

**APPLICATIONS** Centrifuge tube to remove product from lid. Optimal working dilutions should be determined experimentally by the investigator. Prepare working dilution immediately before use.

Western Blot 1:10,000 – 1:25,000

Immunoprecipitation 2 – 10 µg/mg lysate

**APPLICATION NOTES** Western blot of immunoprecipitates performed using Normal Pig Serum (Cat. No. S100-020), Goat anti-Rabbit Light Chain HRP Conjugate (Cat. No. A120-113P) and 4-8% SDS-PAGE (link to IP-western blot protocol in Additional Info section below).

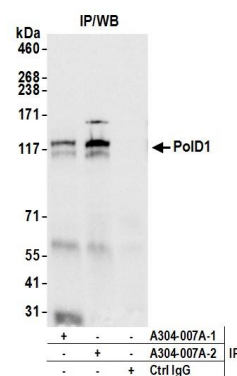
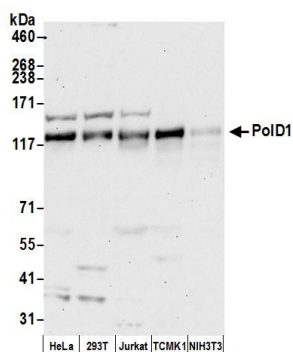
Western blot of lysates performed using standard western blot reagents and 4-8% SDS-PAGE.

**ADDITIONAL INFO** <https://www.bethyl.com/product/A304-007A>

Use the link above to view SDS, a current list of citations, and other product specific information.

IP-western blot protocol: [https://www.bethyl.com/content/protocol\\_IP\\_WB](https://www.bethyl.com/content/protocol_IP_WB)

This document certifies that this product has met all of the quality control standards defined by Bethyl Laboratories, Inc.  
Eric McIntush, PhD | Chief Scientific Officer Date: June 21, 2019



**Detection of human and mouse PolD1 by western blot.**

*Samples:* Whole cell lysate (50 µg) from HeLa, HEK293T, Jurkat, TCMK-1, and NIH 3T3 cells prepared using NETN lysis buffer. *Antibody:* Affinity purified rabbit anti-PolD1 antibody A304-007A (lot A304-007A-2) used for WB at 0.04 µg/ml. *Detection:* Chemiluminescence with an exposure time of 30 seconds.

**Detection of human PolD1 by western blot of immunoprecipitates.**

*Samples:* Whole cell lysate (1.0 mg per IP reaction; 20% of IP loaded) from Jurkat cells prepared using NETN lysis buffer. *Antibodies:* Affinity purified rabbit anti-PolD1 antibody A304-007A (lot A304-007A-2) used for IP at 6 µg per reaction. PolD1 was also immunoprecipitated by a previous lot of this antibody (lot A304-007A-1). For blotting immunoprecipitated PolD1, A304-007A was used at 1 µg/ml. *Detection:* Chemiluminescence with an exposure time of 3 seconds.