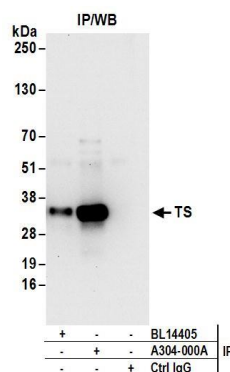


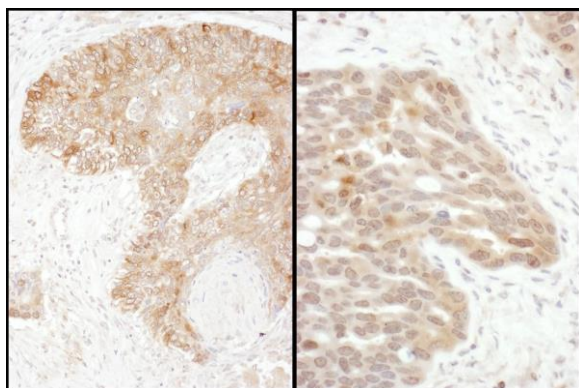
**Detection of human and mouse TS by western blot.**

*Samples:* Whole cell lysate (50 µg) from Jurkat, HEK293T, HeLa, mouse TCMK-1, and mouse NIH 3T3 cells. *Antibodies:* Affinity purified rabbit anti-TS antibody A304-000A (lot A304-000A-1) used for WB at 0.1 µg/ml. *Detection:* Chemiluminescence with an exposure time of 30 seconds.



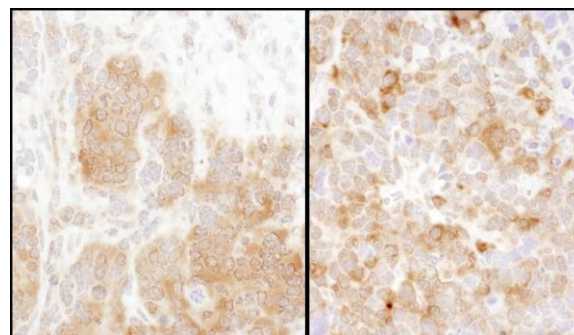
**Detection of human TS by western blot of immunoprecipitates.**

*Samples:* Whole cell lysate (1 mg for IP; 20% of IP loaded) from Jurkat cells. *Antibodies:* Affinity purified rabbit anti-TS antibody A304-000A (lot A304-000A-1) used for IP at 6 µg/mg lysate. TS was also immunoprecipitated by rabbit anti-TS antibody BL14405. For blotting immunoprecipitated TS, A304-000A was used at 1 µg/ml. *Detection:* Chemiluminescence with an exposure time of 10 seconds.



**Detection of human TS by immunohistochemistry.**

*Samples:* FFPE sections of human ovarian carcinoma (left) and lung cancer (right). *Antibody:* Affinity purified rabbit anti-TS (Cat. No. A304-000A Lot1) used at a dilution of 1:1,000 (1µg/ml). *Detection:* DAB



**Detection of mouse TS by immunohistochemistry.**

*Samples:* FFPE sections of mouse teratoma (left) and plasmacytoma (right). *Antibody:* Affinity purified rabbit anti-TS (Cat. No. A304-000A Lot1) used at a dilution of 1:1,000 (1µg/ml). *Detection:* DAB