

# RRBP1 Antibody

Rabbit Polyclonal

Antigen Affinity Purified

Protein ID BAF73807.2

Catalog No. A303-997A

GeneID 6238

Lot No. A303-997A-1



|                              |   |
|------------------------------|---|
| <b>APPLICATIONS</b>          | WB, IP  |
| <b>SPECIES REACTIVITY</b>    | Human, Mouse  |
| <b>AMOUNT</b>                | 100 µl  |
| <b>CONCENTRATION</b>         | 1000 µg/ml  |
| <b>STORAGE/SHELF LIFE</b>    | 2 - 8° C / 1 year from date of receipt  |
| <b>PHYSICAL STATE</b>        | Liquid  |
| <b>BUFFER</b>                | Tris-citrate/phosphate buffer, pH 7 to 8 containing 0.09% Sodium Azide                          |
| <b>ISOTYPE</b>               | IgG   |
| <b>ORIGIN</b>                | USA   |
| <b>PRODUCTION PROCEDURES</b> | Antibody was affinity purified using an epitope specific to RRBP1 immobilized on solid support. |

The epitope recognized by A303-997A maps to a region between residue 1490 to 1540 of human Ribosome Binding Protein 1 using the numbering given in entry BAF73807.2 (GeneID 6238).

Antibody concentration was determined by extinction coefficient: absorbance at 280 nm of 1.4 equals 1.0 mg of IgG.

**APPLICATIONS** Centrifuge tube to remove product from lid. Optimal working dilutions should be determined experimentally by the investigator. Prepare working dilution immediately before use.

Western Blot 1:2,000 - 1:10,000

Immunoprecipitation 2 - 10 µg/mg lysate

**APPLICATION NOTES** Western blot of immunoprecipitates performed using Normal Pig Serum (Cat. No. S100-020), Goat anti-Rabbit Light Chain HRP Conjugate (Cat. No. A120-113P) and 4-8% SDS-PAGE (link to IP-western blot protocol in Additional Info section below).

Western blot of lysates performed using standard western blot reagents and 4-8% SDS-PAGE.

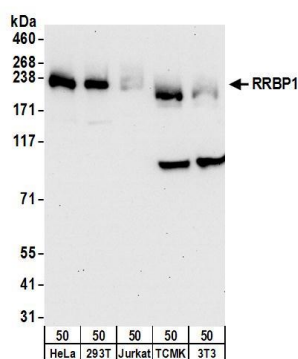
## ADDITIONAL INFO

<https://www.bethyl.com/product/A303-997A>

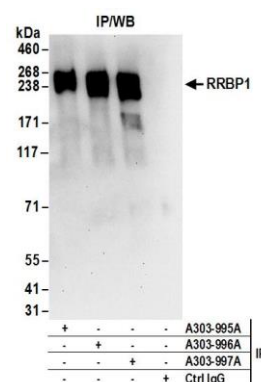
Use the link above to view SDS, a current list of citations, and other product specific information.

IP-western blot protocol: [https://www.bethyl.com/content/protocol\\_IP\\_WB](https://www.bethyl.com/content/protocol_IP_WB)

This document certifies that this product has met all of the quality control standards defined by Bethyl Laboratories, Inc.  
Eric McIntush, PhD | Chief Scientific Officer Date: June 21, 2019



**Detection of human and mouse RRB1 by western blot.**  
*Samples:* Whole cell lysate (50 µg) from HeLa, HEK293T, Jurkat, mouse TCMK-1, and mouse NIH 3T3 cells.  
*Antibodies:* Affinity purified rabbit anti-RRBP1 antibody A303-997A (lot A303-997A-1) used for WB at 0.1 µg/ml.  
*Detection:* Chemiluminescence with an exposure time of 30 seconds.



**Detection of human RRB1 by western blot of immunoprecipitates.** *Samples:* Whole cell lysate (1 mg for IP; 20% of IP loaded) from HeLa cells. *Antibodies:* Affinity purified rabbit anti-RRBP1 antibody A303-997A (lot A303-997A-1) used for IP at 6 µg/mg lysate. RRB1 was also immunoprecipitated by rabbit anti-RRBP1 antibodies A303-995A and A303-996A. For blotting immunoprecipitated RRB1, A303-997A was used at 1 µg/ml. *Detection:* Chemiluminescence with an exposure time of 30 seconds.