

RRBP1 Antibody

Rabbit Polyclonal

Antigen Affinity Purified

Protein ID BAF73807.2

Catalog No. A303-996A

GeneID 6238

Lot No. A303-996A-1



APPLICATIONS	WB, IP
SPECIES REACTIVITY	Human
AMOUNT	100 µl
CONCENTRATION	1000 µg/ml
STORAGE/SHELF LIFE	2 - 8° C / 1 year from date of receipt
PHYSICAL STATE	Liquid
BUFFER	Tris-citrate/phosphate buffer, pH 7 to 8 containing 0.09% Sodium Azide
ISOTYPE	IgG
ORIGIN	USA
PRODUCTION PROCEDURES	Antibody was affinity purified using an epitope specific to RRBP1 immobilized on solid support.

The epitope recognized by A303-996A maps to a region between residue 1425 to 1472 of human Ribosome Binding Protein 1 using the numbering given in entry BAF73807.2 (GeneID 6238).

Antibody concentration was determined by extinction coefficient: absorbance at 280 nm of 1.4 equals 1.0 mg of IgG.

APPLICATIONS Centrifuge tube to remove product from lid. Optimal working dilutions should be determined experimentally by the investigator. Prepare working dilution immediately before use.

Western Blot 1:2,000 - 1:10,000

Immunoprecipitation 2 - 10 µg/mg lysate

APPLICATION NOTES Western blot of immunoprecipitates performed using Normal Pig Serum (Cat. No. S100-020), Goat anti-Rabbit Light Chain HRP Conjugate (Cat. No. A120-113P) and 4-8% SDS-PAGE (link to IP-western blot protocol in Additional Info section below).

Western blot of lysates performed using standard western blot reagents and 4-8% SDS-PAGE.

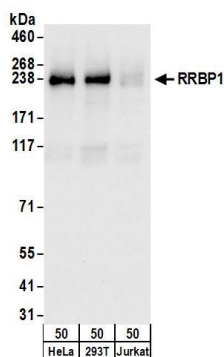
ADDITIONAL INFO

<https://www.bethyl.com/product/A303-996A>

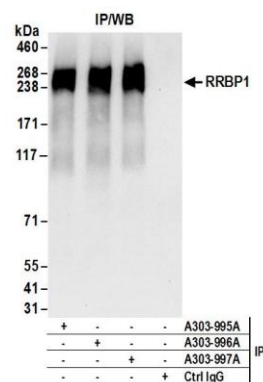
Use the link above to view SDS, a current list of citations, and other product specific information.

IP-western blot protocol: https://www.bethyl.com/content/protocol_IP_WB

This document certifies that this product has met all of the quality control standards defined by Bethyl Laboratories, Inc.
Eric McIntush, PhD | Chief Scientific Officer Date: June 21, 2019



Detection of human RRBP1 by western blot. *Samples:* Whole cell lysate (50 μ g) from HeLa, HEK293T, and Jurkat cells. *Antibodies:* Affinity purified rabbit anti-RRBP1 antibody A303-996A (lot A303-996A-1) used for WB at 0.1 μ g/ml. *Detection:* Chemiluminescence with an exposure time of 10 seconds.



Detection of human RRBP1 by western blot of immunoprecipitates. *Samples:* Whole cell lysate (1 mg for IP; 20% of IP loaded) from HeLa cells. *Antibodies:* Affinity purified rabbit anti-RRBP1 antibody A303-996A (lot A303-996A-1) used for IP at 6 μ g/mg lysate. RRBP1 was also immunoprecipitated by rabbit anti-RRBP1 antibodies A303-995A and A303-997A. For blotting immunoprecipitated RRBP1, A303-996A was used at 1 μ g/ml. *Detection:* Chemiluminescence with an exposure time of 10 seconds.