

EXOSC10 Antibody

Rabbit Polyclonal

Antigen Affinity Purified

Protein ID NP_001001998.1

Catalog No. A303-987A

GeneID 5394

Lot No. A303-987A-1



APPLICATIONS	WB, IP, IHC
SPECIES REACTIVITY	Human, Mouse
AMOUNT	100 µl
CONCENTRATION	1000 µg/ml
STORAGE/SHELF LIFE	2 - 8° C / 1 year from date of receipt
PHYSICAL STATE	Liquid
BUFFER	Tris-citrate/phosphate buffer, pH 7 to 8 containing 0.09% Sodium Azide
ISOTYPE	IgG
ORIGIN	USA
PRODUCTION PROCEDURES	Antibody was affinity purified using an epitope specific to EXOSC10 immobilized on solid support.

The epitope recognized by A303-987A maps to a region between residue 200 to 250 of human Exosome Component 10 using the numbering given in entry NP_001001998.1 (GeneID 5394).

Antibody concentration was determined by extinction coefficient: absorbance at 280 nm of 1.4 equals 1.0 mg of IgG.

APPLICATIONS Centrifuge tube to remove product from lid. Optimal working dilutions should be determined experimentally by the investigator. Prepare working dilution immediately before use.

Western Blot 1:1,000 - 1:5,000

Immunoprecipitation 2 - 10 µg/mg lysate

Immunohistochemistry 1:500 - 1:2,000. Epitope retrieval with citrate buffer pH 6.0 is recommended for FFPE tissue sections.

APPLICATION NOTES Western blot of immunoprecipitates performed using Normal Pig Serum (Cat. No. S100-020), Goat anti-Rabbit Light Chain HRP Conjugate (Cat. No. A120-113P) and 4-8% SDS-PAGE (link to IP-western blot protocol in Additional Info section below).

IHC HUMAN CONTROLS Western blot of lysates performed using standard western blot reagents and 4-8% SDS-PAGE. Breast Carcinoma, Ovarian Carcinoma

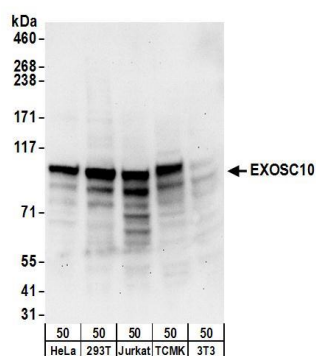
IHC MOUSE CONTROLS Renal Cell Carcinoma

ADDITIONAL INFO <https://www.bethyl.com/product/A303-987A>

Use the link above to view SDS, a current list of citations, and other product specific information.

IP-western blot protocol: https://www.bethyl.com/content/protocol_IP_WB

This document certifies that this product has met all of the quality control standards defined by Bethyl Laboratories, Inc.
Eric McIntush, PhD | Chief Scientific Officer Date: June 21, 2019

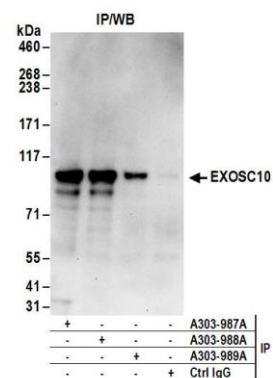


Detection of human and mouse EXOSC10 by western blot.

Samples: Whole cell lysate (50 µg) from HeLa, HEK293T, Jurkat, mouse TCMK-1, and mouse NIH 3T3 cells.

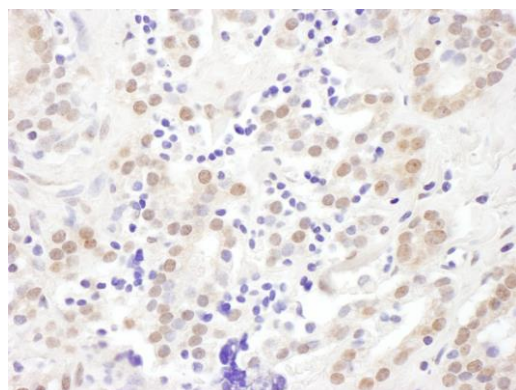
Antibodies: Affinity purified rabbit anti-EXOSC10 antibody A303-987A (lot A303-987A-1) used for WB at 0.4 µg/ml.

Detection: Chemiluminescence with an exposure time of 30 seconds.



Detection of human EXOSC10 by western blot of immunoprecipitates.

Samples: Whole cell lysate (1 mg for IP; 20% of IP loaded) from HeLa cells. *Antibodies:* Affinity purified rabbit anti-EXOSC10 antibody A303-987A (lot A303-987A-1) used for IP at 6 µg/mg lysate. EXOSC10 was also immunoprecipitated by rabbit anti-EXOSC10 antibodies A303-988A and A303-989A. For blotting immunoprecipitated EXOSC10, A303-987A was used at 1 µg/ml. *Detection:* Chemiluminescence with an exposure time of 30 seconds.

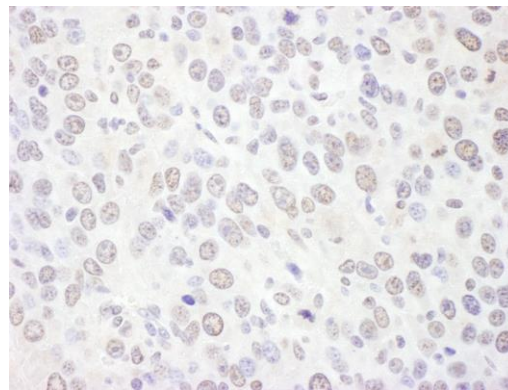


Detection of human EXOSC10 by immunohistochemistry.

Sample: FFPE section of human breast carcinoma.

Antibody: Affinity purified rabbit anti- EXOSC10 (Cat. No. A303-987A Lot1) used at a dilution of 1:1,000 (1 µg/ml).

Detection: DAB



Detection of mouse EXOSC10 by immunohistochemistry.

Sample: FFPE section of mouse renal cell carcinoma.

Antibody: Affinity purified rabbit anti- EXOSC10 (Cat. No. A303-987A Lot1) used at a dilution of 1:1,000 (1 µg/ml).

Detection: DAB