

Exportin-T Antibody

Rabbit Polyclonal

Antigen Affinity Purified

Protein ID NP_009166.2

Catalog No. A303-972A

GeneID 11260

Lot No. A303-972A-1



APPLICATIONS	WB
SPECIES REACTIVITY	Human, Mouse
PRESUMED REACTIVITY	Based on 100% sequence identity, this antibody is predicted to react with Orangutan
AMOUNT	100 µl
CONCENTRATION	1000 µg/ml
STORAGE/SHELF LIFE	2 - 8° C / 1 year from date of receipt
PHYSICAL STATE	Liquid
BUFFER	Tris-citrate/phosphate buffer, pH 7 to 8 containing 0.09% Sodium Azide
ISOTYPE	IgG
ORIGIN	USA
PRODUCTION PROCEDURES	Antibody was affinity purified using an epitope specific to Exportin-T immobilized on solid support.

The epitope recognized by A303-972A maps to a region between residue 825 to 875 of human Exportin, tRNA using the numbering given in entry NP_009166.2 (GeneID 11260).

Antibody concentration was determined by extinction coefficient: absorbance at 280 nm of 1.4 equals 1.0 mg of IgG.

APPLICATIONS Centrifuge tube to remove product from lid. Optimal working dilutions should be determined experimentally by the investigator. Prepare working dilution immediately before use.

Western Blot 1:1,000 – 1:5,000

Immunoprecipitation Not recommended

APPLICATION NOTES Western blot of lysates performed using standard western blot reagents and 4-8% SDS-PAGE.

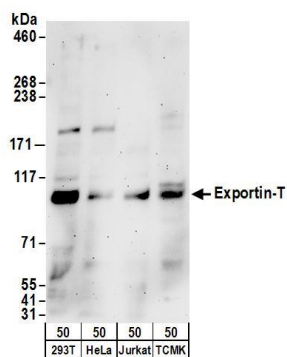
ADDITIONAL INFO <https://www.bethyl.com/product/A303-972A>

Use the link above to view SDS, a current list of citations, and other product specific information.

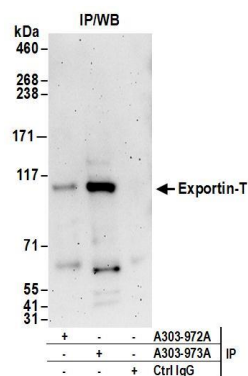
This document certifies that this product has met all of the quality control standards defined by Bethyl Laboratories, Inc.

Eric McIntush, PhD | Chief Scientific Officer

Date: June 21, 2019



Detection of human and mouse Exportin-T by western blot. *Samples:* Whole cell lysate (50 µg) from HEK293T, HeLa, Jurkat, and mouse TCMK-1 cells. *Antibodies:* Affinity purified rabbit anti-Exportin-T antibody A303-972A (lot A303-972A-1) used for WB at 0.4 µg/ml. *Detection:* Chemiluminescence with an exposure time of 3 minutes.



Detection of human Exportin-T by western blot of immunoprecipitates. *Samples:* Whole cell lysate (1 mg for IP; 20% of IP loaded) from HEK293T cells. *Antibodies:* Affinity purified rabbit anti-Exportin-T antibody A303-972A (lot A303-972A-1) used for IP at 6 µg/mg lysate. Exportin-T was also immunoprecipitated by rabbit anti-Exportin-T antibody A303-973A. For blotting immunoprecipitated Exportin-T, A303-972A was used at 1 µg/ml. *Detection:* Chemiluminescence with an exposure time of 3 minutes.