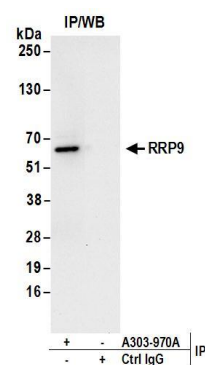


**Detection of human RRP9 by western blot.** *Samples:* Whole cell lysate (50 µg) from HEK293T, HeLa, and Jurkat cells. *Antibodies:* Affinity purified rabbit anti-RRP9 antibody A303-970A (lot A303-970A-1) used for WB at 0.4 µg/ml. *Detection:* Chemiluminescence with an exposure time of 3 minutes.



**Detection of human RRP9 by western blot of immunoprecipitates.** *Samples:* Whole cell lysate (1 mg for IP; 20% of IP loaded) from HEK293T cells. *Antibodies:* Affinity purified rabbit anti-RRP9 antibody A303-970A (lot A303-970A-1) used for IP at 6 µg/mg lysate. For blotting immunoprecipitated RRP9, A303-970A was used at 1 µg/ml. *Detection:* Chemiluminescence with an exposure time of 30 seconds.