

# SLBP Antibody

Rabbit Polyclonal

Antigen Affinity Purified

Protein ID NP\_006518.1

Catalog No. A303-968A

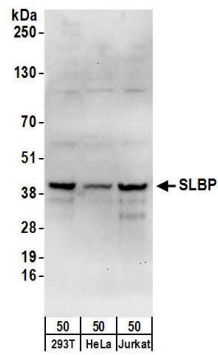
GeneID 7884

Lot No. A303-968A-1

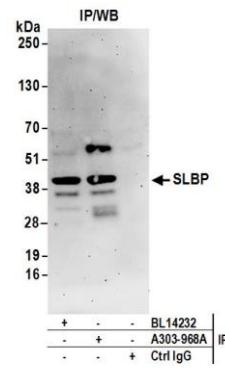


<b>APPLICATIONS</b>	WB, IP				
<b>SPECIES REACTIVITY</b>	Human				
<b>AMOUNT</b>	100 $\mu$ l				
<b>CONCENTRATION</b>	1000 $\mu$ g/ml				
<b>STORAGE/SHELF LIFE</b>	2 - 8° C / 1 year from date of receipt				
<b>PHYSICAL STATE</b>	Liquid				
<b>BUFFER</b>	Tris-citrate/phosphate buffer, pH 7 to 8 containing 0.09% Sodium Azide				
<b>ISOTYPE</b>	IgG				
<b>ORIGIN</b>	USA				
<b>PRODUCTION PROCEDURES</b>	<p>Antibody was affinity purified using an epitope specific to SLBP immobilized on solid support.</p> <p>The epitope recognized by A303-968A maps to a region between residue 220 to 270 of human Stem-Loop Binding Protein using the numbering given in entry NP_006518.1 (GeneID 7884).</p> <p>Antibody concentration was determined by extinction coefficient: absorbance at 280 nm of 1.4 equals 1.0 mg of IgG.</p>				
<b>APPLICATIONS</b>	<p>Centrifuge tube to remove product from lid. Optimal working dilutions should be determined experimentally by the investigator. Prepare working dilution immediately before use.</p> <table><tr><td>Western Blot</td><td>1:1,000 - 1:5,000</td></tr><tr><td>Immunoprecipitation</td><td>2 - 10 <math>\mu</math>g/mg lysate</td></tr></table>	Western Blot	1:1,000 - 1:5,000	Immunoprecipitation	2 - 10 $\mu$ g/mg lysate
Western Blot	1:1,000 - 1:5,000				
Immunoprecipitation	2 - 10 $\mu$ g/mg lysate				
<b>APPLICATION NOTES</b>	<p>Western blot of immunoprecipitates performed using Normal Pig Serum (Cat. No. S100-020), Goat anti-Rabbit Light Chain HRP Conjugate (Cat. No. A120-113P) and 4-20% SDS-PAGE (link to IP-western blot protocol in Additional Info section below).</p> <p>Western blot of lysates performed using standard western blot reagents and 4-20% SDS-PAGE.</p>				
<b>ADDITIONAL INFO</b>	<p><a href="https://www.bethyl.com/product/A303-968A">https://www.bethyl.com/product/A303-968A</a></p> <p>Use the link above to view SDS, a current list of citations, and other product specific information.</p> <p>IP-western blot protocol: <a href="https://www.bethyl.com/content/protocol_IP_WB">https://www.bethyl.com/content/protocol_IP_WB</a></p>				

This document certifies that this product has met all of the quality control standards defined by Bethyl Laboratories, Inc.  
Eric McIntush, PhD | Chief Scientific Officer Date: June 21, 2019



**Detection of human SLBP by western blot.** *Samples:* Whole cell lysate (50  $\mu$ g) from HEK293T, HeLa, and Jurkat cells. *Antibodies:* Affinity purified rabbit anti-SLBP antibody A303-968A (lot A303-968A-1) used for WB at 0.4  $\mu$ g/ml. *Detection:* Chemiluminescence with an exposure time of 30 seconds.



**Detection of human SLBP by western blot of immunoprecipitates.** *Samples:* Whole cell lysate (1 mg for IP; 20% of IP loaded) from HEK293T cells. *Antibodies:* Affinity purified rabbit anti-SLBP antibody A303-968A (lot A303-968A-1) used for IP at 6  $\mu$ g/mg lysate. SLBP was also immunoprecipitated by rabbit anti-SLBP antibody BL14232. For blotting immunoprecipitated SLBP, A303-968A was used at 1  $\mu$ g/ml. *Detection:* Chemiluminescence with an exposure time of 3 minutes.