

Androgen Receptor Antibody

Rabbit Polyclonal

Antigen Affinity Purified Protein ID NP_000035.2

Catalog No. A303-965A GeneID 367

Lot No. A303-965A-1



APPLICATIONS	WB, IP, IHC
SPECIES REACTIVITY	Human
PRESUMED REACTIVITY	Based on 100% sequence identity, this antibody is predicted to react with Mouse, Rat, Dog, Pig, Monkey and Chimpanzee
AMOUNT	100 µl
CONCENTRATION	1000 µg/ml
STORAGE/SHELF LIFE	2 - 8° C / 1 year from date of receipt
PHYSICAL STATE	Liquid
BUFFER	Tris-citrate/phosphate buffer, pH 7 to 8 containing 0.09% Sodium Azide
ISOTYPE	IgG
ORIGIN	USA
PRODUCTION PROCEDURES	Antibody was affinity purified using an epitope specific to Androgen Receptor immobilized on solid support.

The epitope recognized by A303-965A maps to a region between residue 1 to 50 of human Androgen Receptor using the numbering given in entry NP_000035.2 (GeneID 367).

Antibody concentration was determined by extinction coefficient: absorbance at 280 nm of 1.4 equals 1.0 mg of IgG.

APPLICATIONS Centrifuge tube to remove product from lid. Optimal working dilutions should be determined experimentally by the investigator. Prepare working dilution immediately before use.

Western Blot 1:1,000 - 1:5,000

Immunoprecipitation 2 - 10 µg/mg lysate

Immunohistochemistry 1:500 - 1:2,000. Epitope retrieval with citrate buffer pH 6.0 is recommended for FFPE tissue sections.

APPLICATION NOTES Western blot of immunoprecipitates performed using Normal Pig Serum (Cat. No. S100-020), Goat anti-Rabbit Light Chain HRP Conjugate (Cat. No. A120-113P) and 4-8% SDS-PAGE (link to IP-western blot protocol in Additional Info section below).

Western blot of lysates performed using standard western blot reagents and 4-8% SDS-PAGE.

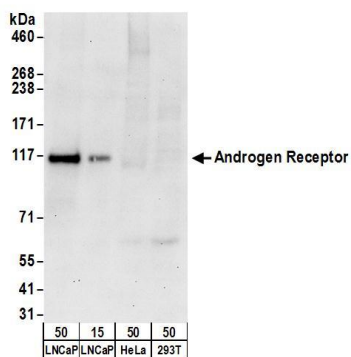
IHC HUMAN CONTROLS Ovarian Carcinoma, Testicular Seminoma

ADDITIONAL INFO <https://www.bethyl.com/product/A303-965A>

Use the link above to view SDS, a current list of citations, and other product specific information.

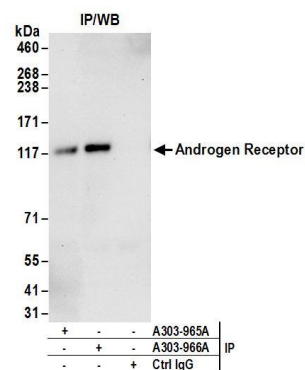
IP-western blot protocol: https://www.bethyl.com/content/protocol_IP_WB

This document certifies that this product has met all of the quality control standards defined by Bethyl Laboratories, Inc.
Eric McIntush, PhD | Chief Scientific Officer Date: June 21, 2019



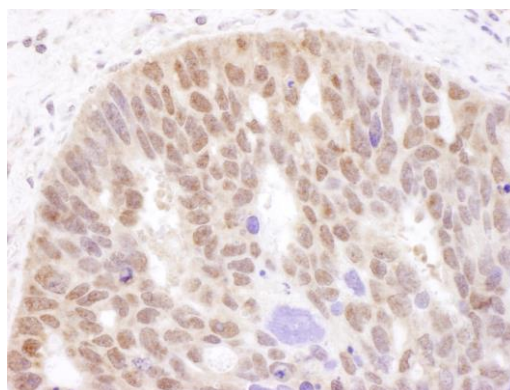
Detection of human Androgen Receptor by western blot.

Samples: Whole cell lysate from LNCaP (15 and 50 µg), HeLa (50µg), and HEK293T (50µg) cells. *Antibodies:* Affinity purified rabbit anti-Androgen Receptor antibody A303-965A (lot A303-965A-1) used for WB at 0.4 µg/ml. *Detection:* Chemiluminescence with an exposure time of 30 seconds.



Detection of human Androgen Receptor by western blot of immunoprecipitates.

Samples: Whole cell lysate (1 mg for IP; 20% of IP loaded) from LNCaP cells. *Antibodies:* Affinity purified rabbit anti-Androgen Receptor antibody A303-965A (lot A303-965A-1) used for IP at 6 µg/mg lysate. Androgen Receptor was also immunoprecipitated by rabbit anti-Androgen Receptor antibody A303-966A. For blotting immunoprecipitated Androgen Receptor, A303-965A was used at 1 µg/ml. *Detection:* Chemiluminescence with an exposure time of 30 seconds.



Detection of human Androgen Receptor by immunohistochemistry. *Sample:* FFPE section of human ovarian carcinoma. *Antibody:* Affinity purified rabbit anti-Androgen Receptor (Cat. No. A303-965A Lot1) used at a dilution of 1:1,000 (1µg/ml). *Detection:* DAB