

EPRS Antibody

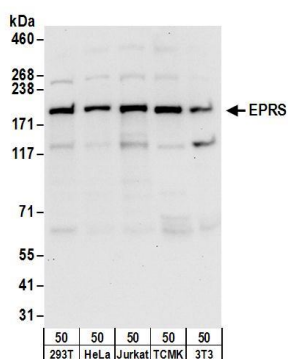
Rabbit Polyclonal

Antigen Affinity Purified Protein ID NP_004437.2
Catalog No. A303-959A GeneID 2058
Lot No. A303-959A-1



APPLICATIONS	WB, IP, IHC
SPECIES REACTIVITY	Human, Mouse
AMOUNT	100 μ l
CONCENTRATION	1000 μ g/ml
STORAGE/SHELF LIFE	2 - 8 $^{\circ}$ C / 1 year from date of receipt
PHYSICAL STATE	Liquid
BUFFER	Tris-citrate/phosphate buffer, pH 7 to 8 containing 0.09% Sodium Azide
ISOTYPE	IgG
ORIGIN	USA
PRODUCTION PROCEDURES	<p>Antibody was affinity purified using an epitope specific to EPRS immobilized on solid support.</p> <p>The epitope recognized by A303-959A maps to a region between residue 950 to 1000 of human Glutamyl-prolyl-tRNA Synthetase using the numbering given in entry NP_004437.2 (GeneID 2058).</p> <p>Antibody concentration was determined by extinction coefficient: absorbance at 280 nm of 1.4 equals 1.0 mg of IgG.</p>
APPLICATIONS	<p>Centrifuge tube to remove product from lid. Optimal working dilutions should be determined experimentally by the investigator. Prepare working dilution immediately before use.</p> <p>Western Blot 1:2,000 - 1:10,000</p> <p>Immunoprecipitation 2 - 10 μg/mg lysate</p> <p>Immunohistochemistry 1:500 - 1:2,000. Epitope retrieval with citrate buffer pH 6.0 is recommended for FFPE tissue sections.</p>
APPLICATION NOTES	<p>Western blot of immunoprecipitates performed using Normal Pig Serum (Cat. No. S100-020), Goat anti-Rabbit Light Chain HRP Conjugate (Cat. No. A120-113P) and 4-8% SDS-PAGE (link to IP-western blot protocol in Additional Info section below).</p> <p>Western blot of lysates performed using standard western blot reagents and 4-8% SDS-PAGE.</p>
IHC HUMAN CONTROLS	Breast Carcinoma, Ovarian Carcinoma
ADDITIONAL INFO	<p>https://www.bethyl.com/product/A303-959A</p> <p>Use the link above to view SDS, a current list of citations, and other product specific information. IP-western blot protocol: https://www.bethyl.com/content/protocol_IP_WB</p>

This document certifies that this product has met all of the quality control standards defined by Bethyl Laboratories, Inc.
Eric McIntush, PhD | Chief Scientific Officer Date: June 21, 2019

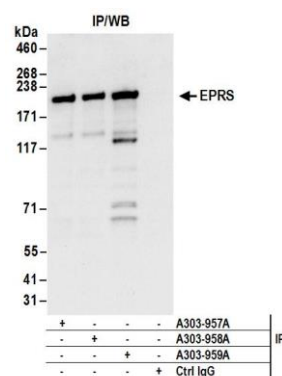


Detection of human and mouse EPRS by western blot.

Samples: Whole cell lysate (50 µg) from HEK293T, HeLa, Jurkat, mouse TCMK-1, and mouse NIH 3T3 cells.

Antibodies: Affinity purified rabbit anti-EPRS antibody A303-959A (lot A303-959A-1) used for WB at 0.1 µg/ml.

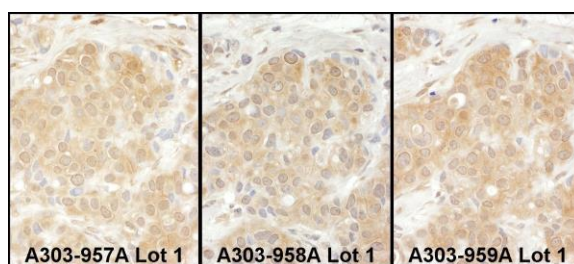
Detection: Chemiluminescence with an exposure time of 10 seconds.



Detection of human EPRS by western blot of immunoprecipitates.

Samples: Whole cell lysate (1 mg for IP; 20% of IP loaded) from HEK293T cells.

Antibodies: Affinity purified rabbit anti-EPRS antibody A303-959A (lot A303-959A-1) used for IP at 6 µg/mg lysate. EPRS was also immunoprecipitated by rabbit anti-EPRS antibodies A303-957A and A303-958A. For blotting immunoprecipitated EPRS, A303-959A was used at 1 µg/ml. **Detection:** Chemiluminescence with an exposure time of 10 seconds.



Detection of human EPRS by immunohistochemistry.

Samples: FFPE serial sections of human breast carcinoma.

Antibody: Affinity purified rabbit anti-EPRS (Cat. No. A303-957A Lot1, left image, A303-958A Lot1, middle image and Cat. No. A303-959A Lot1, right image) used at a dilution of 1:1,000 (1 µg/ml) **Detection:** DAB