

# EPRS Antibody

Rabbit Polyclonal

Antigen Affinity Purified

Protein ID NP\_004437.2

Catalog No. A303-958A

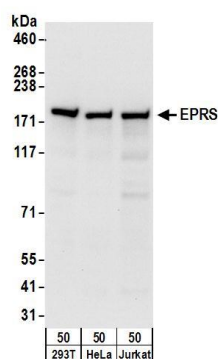
GeneID 2058

Lot No. A303-958A-1

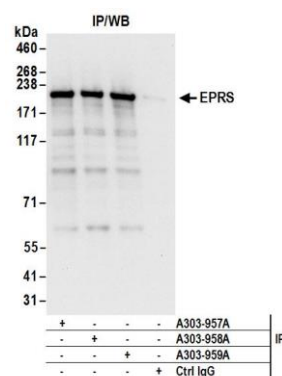


<b>APPLICATIONS</b>	WB, IP, IHC
<b>SPECIES REACTIVITY</b>	Human
<b>AMOUNT</b>	100 µl
<b>CONCENTRATION</b>	1000 µg/ml
<b>STORAGE/SHELF LIFE</b>	2 - 8° C / 1 year from date of receipt
<b>PHYSICAL STATE</b>	Liquid
<b>BUFFER</b>	Tris-citrate/phosphate buffer, pH 7 to 8 containing 0.09% Sodium Azide
<b>ISOTYPE</b>	IgG
<b>ORIGIN</b>	USA
<b>PRODUCTION PROCEDURES</b>	<p>Antibody was affinity purified using an epitope specific to EPRS immobilized on solid support.</p> <p>The epitope recognized by A303-958A maps to a region between residue 275 to 325 of human Glutamyl-prolyl-tRNA Synthetase using the numbering given in entry NP_004437.2 (GeneID 2058).</p> <p>Antibody concentration was determined by extinction coefficient: absorbance at 280 nm of 1.4 equals 1.0 mg of IgG.</p>
<b>APPLICATIONS</b>	<p>Centrifuge tube to remove product from lid. Optimal working dilutions should be determined experimentally by the investigator. Prepare working dilution immediately before use.</p> <p>Western Blot 1:2,000 - 1:10,000</p> <p>Immunoprecipitation 2 - 10 µg/mg lysate</p> <p>Immunohistochemistry 1:500 - 1:2,000. Epitope retrieval with citrate buffer pH 6.0 is recommended for FFPE tissue sections.</p>
<b>APPLICATION NOTES</b>	<p>Western blot of immunoprecipitates performed using Normal Pig Serum (Cat. No. S100-020), Goat anti-Rabbit Light Chain HRP Conjugate (Cat. No. A120-113P) and 4-8% SDS-PAGE (link to IP-western blot protocol in Additional Info section below).</p> <p>Western blot of lysates performed using standard western blot reagents and 4-8% SDS-PAGE.</p>
<b>IHC HUMAN CONTROLS</b>	Breast Carcinoma, Ovarian Carcinoma
<b>ADDITIONAL INFO</b>	<p><a href="https://www.bethyl.com/product/A303-958A">https://www.bethyl.com/product/A303-958A</a></p> <p>Use the link above to view SDS, a current list of citations, and other product specific information. IP-western blot protocol: <a href="https://www.bethyl.com/content/protocol_IP_WB">https://www.bethyl.com/content/protocol_IP_WB</a></p>

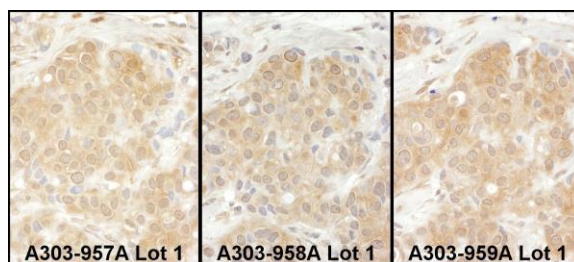
This document certifies that this product has met all of the quality control standards defined by Bethyl Laboratories, Inc.  
Eric McIntush, PhD | Chief Scientific Officer Date: June 21, 2019



**Detection of human EPRS by western blot.** *Samples:* Whole cell lysate (50  $\mu$ g) from HEK293T, HeLa, and Jurkat cells. *Antibodies:* Affinity purified rabbit anti-EPRS antibody A303-958A (lot A303-958A-1) used for WB at 0.1  $\mu$ g/ml. *Detection:* Chemiluminescence with an exposure time of 10 seconds.



**Detection of human EPRS by western blot of immunoprecipitates.** *Samples:* Whole cell lysate (1 mg for IP; 20% of IP loaded) from HEK293T cells. *Antibodies:* Affinity purified rabbit anti-EPRS antibody A303-958A (lot A303-958A-1) used for IP at 6  $\mu$ g/mg lysate. EPRS was also immunoprecipitated by rabbit anti-EPRS antibodies A303-957A and A303-959A. For blotting immunoprecipitated EPRS, A303-958A was used at 1  $\mu$ g/ml. *Detection:* Chemiluminescence with an exposure time of 3 seconds.



**Detection of human EPRS by immunohistochemistry.**

*Samples:* FFPE serial sections of human breast carcinoma. *Antibody:* Affinity purified rabbit anti-EPRS (Cat. No. A303-957A Lot1, left image, A303-958A Lot1, middle image and Cat. No. A303-959A Lot1, right image) used at a dilution of 1:1,000 (1  $\mu$ g/ml) *Detection:* DAB