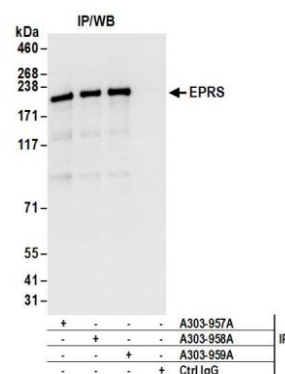
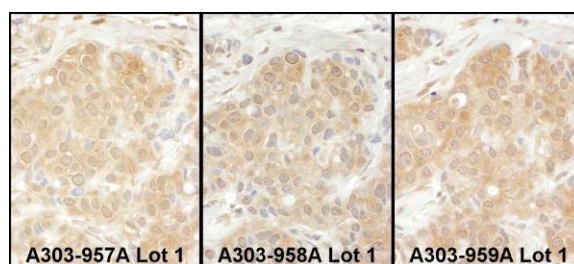


Detection of human EPRS by western blot. *Samples:* Whole cell lysate (50 µg) from HEK293T, HeLa, and Jurkat cells. *Antibodies:* Affinity purified rabbit anti-EPRS antibody A303-957A (lot A303-957A-1) used for WB at 0.1 µg/ml. *Detection:* Chemiluminescence with an exposure time of 10 seconds.



Detection of human EPRS by western blot of immunoprecipitates. *Samples:* Whole cell lysate (1 mg for IP; 20% of IP loaded) from HEK293T cells. *Antibodies:* Affinity purified rabbit anti-EPRS antibody A303-957A (lot A303-957A-1) used for IP at 6 µg/mg lysate. EPRS was also immunoprecipitated by rabbit anti-EPRS antibodies A303-958A and A303-959A. For blotting immunoprecipitated EPRS, A303-957A was used at 1 µg/ml. *Detection:* Chemiluminescence with an exposure time of 3 seconds.



Detection of human EPRS by immunohistochemistry.

Samples: FFPE serial sections of human breast carcinoma. *Antibody:* Affinity purified rabbit anti-EPRS (Cat. No. A303-957A Lot1, left image, A303-958A Lot1, middle image and Cat. No. A303-959A Lot1, right image) used at a dilution of 1:1,000 (1 µg/ml) *Detection:* DAB