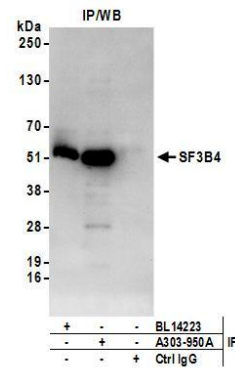


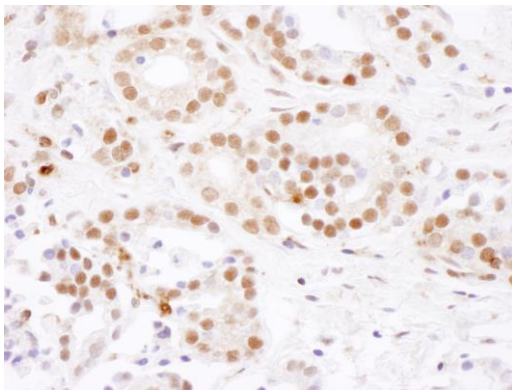
Detection of human and mouse SF3B4 by western blot.

Samples: Whole cell lysate from HEK293T (15 and 50 µg), HeLa (50µg), Jurkat (50µg), and mouse NIH 3T3 (50µg) cells. **Antibodies:** Affinity purified rabbit anti-SF3B4 antibody A303-950A (lot A303-950A-1) used for WB at 0.1 µg/ml. **Detection:** Chemiluminescence with an exposure time of 10 seconds.



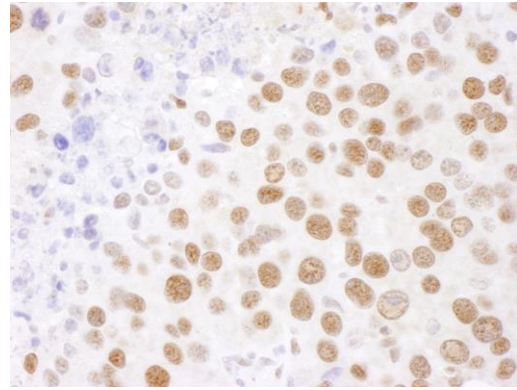
Detection of human SF3B4 by western blot of immunoprecipitates.

Samples: Whole cell lysate (1 mg for IP; 20% of IP loaded) from HEK293T cells. **Antibodies:** Affinity purified rabbit anti-SF3B4 antibody A303-950A (lot A303-950A-1) used for IP at 6 µg/mg lysate. SF3B4 was also immunoprecipitated by rabbit anti-SF3B4 antibody BL14223. For blotting immunoprecipitated SF3B4, A303-950A was used at 1 µg/ml. **Detection:** Chemiluminescence with an exposure time of 10 seconds.



Detection of human SF3B4 by immunohistochemistry.

Sample: FFPE section of human breast carcinoma. **Antibody:** Affinity purified rabbit anti-SF3B4 (Cat. No. A303-950A Lot1) used at a dilution of 1:1,000 (1 µg/ml). **Detection:** DAB



Detection of mouse SF3B4 by immunohistochemistry.

Sample: FFPE section of mouse renal cell carcinoma. **Antibody:** Affinity purified rabbit anti-SF3B4 (Cat. No. A303-950A Lot1) used at a dilution of 1:1,000 (1 µg/ml). **Detection:** DAB