

DBC1 /p30 DBC Antibody

Goat Polyclonal

Antigen Affinity Purified

Protein ID NP_066997.3

Catalog No. A303-942A

GeneID 57805

Lot No. A303-942A-1



APPLICATIONS	WB, IP, IHC
SPECIES REACTIVITY	Human, Mouse
PRESUMED REACTIVITY	Based on 100% sequence identity, this antibody is predicted to react with Orangutan
AMOUNT	100 µl
CONCENTRATION	1000 µg/ml
STORAGE/SHELF LIFE	2 - 8° C / 1 year from date of receipt
PHYSICAL STATE	Liquid
BUFFER	Tris-citrate/phosphate buffer, pH 7 to 8 containing 0.09% Sodium Azide
ISOTYPE	IgG
ORIGIN	USA
PRODUCTION PROCEDURES	Antibody was affinity purified using an epitope specific to DBC1 /p30 DBC immobilized on solid support.

The epitope recognized by A303-942A maps to a region between residue 873 to 923 of human p30 DBC Protein using the numbering given in entry NP_066997.3 (GeneID 57805).

Antibody concentration was determined by extinction coefficient: absorbance at 280 nm of 1.4 equals 1.0 mg of IgG.

APPLICATIONS Centrifuge tube to remove product from lid. Optimal working dilutions should be determined experimentally by the investigator. Prepare working dilution immediately before use.

Western Blot 1:2,000 - 1:10,000

Immunoprecipitation 2 - 10 µg/mg lysate

Immunohistochemistry 1:1,000 - 1:5,000. Epitope retrieval with citrate buffer pH 6.0 is recommended for FFPE tissue sections.

APPLICATION NOTES Western blot of lysates performed using standard western blot reagents and 4-8% SDS-PAGE.

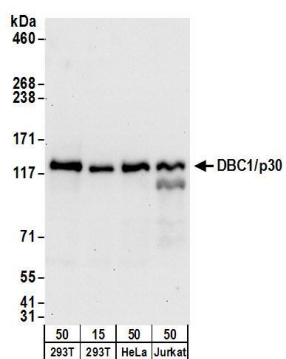
IHC HUMAN CONTROLS Breast Carcinoma, Colon Carcinoma, Ovarian Carcinoma, Prostate Carcinoma, Stomach Adenocarcinoma

IHC MOUSE CONTROLS Hybridoma Tumor, Renal Cell Carcinoma, Teratoma

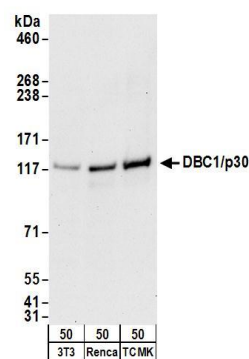
ADDITIONAL INFO <https://www.bethyl.com/product/A303-942A>

Use the link above to view SDS, a current list of citations, and other product specific information.

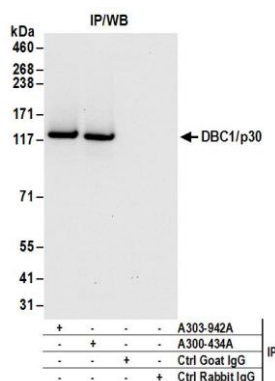
This document certifies that this product has met all of the quality control standards defined by Bethyl Laboratories, Inc.
Eric McIntush, PhD | Chief Scientific Officer Date: June 21, 2019



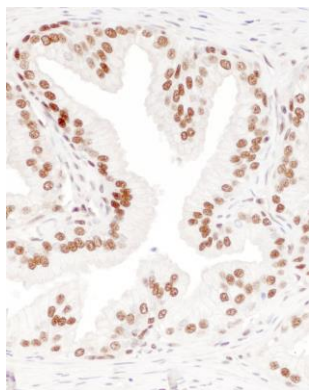
Detection of human DBC1 /p30 by western blot. *Samples:* Whole cell lysate from HEK293T (15 and 50 µg), HeLa (50 µg), and Jurkat (50µg) cells. *Antibodies:* Affinity purified goat anti-DBC1 /p30 antibody A303-942A (lot A303-942A-1) used for WB at 0.1 µg/ml. *Detection:* Chemiluminescence with an exposure time of 30 seconds.



Detection of mouse DBC1 /p30 by western blot. *Samples:* Whole cell lysate (50 µg) from NIH 3T3 , Renca, and TCMK-1 cells. *Antibodies:* Affinity purified goat anti-DBC1 /p30 antibody A303-942A (lot A303-942A-1) used for WB at 0.1 µg/ml. *Detection:* Chemiluminescence with an exposure time of 30 seconds.



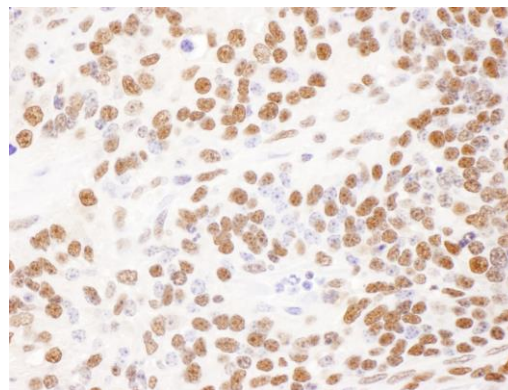
Detection of human DBC1 /p30 by western blot of immunoprecipitates. *Samples:* Whole cell lysate (1 mg for IP; 20% of IP loaded) from HEK293T cells. *Antibodies:* Affinity purified goat anti-DBC1 /p30 antibody A303-942A (lot A303-942A-1) used for IP at 6 µg/mg lysate. DBC1 /p30 was also immunoprecipitated by rabbit anti-DBC1 /p30 antibody A300-434A. For blotting immunoprecipitated DBC1 /p30, A300-434A was used at 1 µg/ml. *Detection:* Chemiluminescence with an exposure time of 10 seconds.

**Detection of human DBC1/p30 by immunohistochemistry.**

Sample: FFPE section of human prostate carcinoma.

Antibody: Affinity purified rabbit anti-BC1/p30 (Cat. No. A303-942A Lot1) used at a dilution of 1:1,000 (1 µg/ml).

Detection: DAB

**Detection of mouse DBC1/p30 by immunohistochemistry.**

Sample: FFPE section of mouse teratoma. *Antibody:* Affinity purified rabbit anti-BC1/p30 (Cat. No. A303-942A Lot1)

used at a dilution of 1:1,000 (1 µg/ml). *Detection:* DAB