

RPS11 Antibody

Rabbit Polyclonal

Antigen Affinity Purified

Protein ID NP_001006.1

Catalog No. A303-936A

GeneID 6205

Lot No. A303-936A-1



APPLICATIONS	WB, IP, IHC
SPECIES REACTIVITY	Human, Mouse
PRESUMED REACTIVITY	Based on 100% sequence identity, this antibody is predicted to react with Rat, X. laevis, Bovine and Dog
AMOUNT	100 µl
CONCENTRATION	1000 µg/ml
STORAGE/SHELF LIFE	2 - 8° C / 1 year from date of receipt
PHYSICAL STATE	Liquid
BUFFER	Tris-citrate/phosphate buffer, pH 7 to 8 containing 0.09% Sodium Azide
ISOTYPE	IgG
ORIGIN	USA
PRODUCTION PROCEDURES	Antibody was affinity purified using an epitope specific to RPS11 immobilized on solid support.

The epitope recognized by A303-936A maps to a region between residue 1 and 50 of human Ribosomal Protein S11 using the numbering given in entry NP_001006.1 (GeneID 6205).

Antibody concentration was determined by extinction coefficient: absorbance at 280 nm of 1.4 equals 1.0 mg of IgG.

APPLICATIONS Centrifuge tube to remove product from lid. Optimal working dilutions should be determined experimentally by the investigator. Prepare working dilution immediately before use.

Western Blot 1:2,000 - 1:10,000

Immunoprecipitation 2 - 10 µg/mg lysate

Immunohistochemistry 1:500 - 1:2,000. Epitope retrieval with citrate buffer pH 6.0 is recommended for FFPE tissue sections.

APPLICATION NOTES Western blot of immunoprecipitates performed using Normal Pig Serum (Cat. No. S100-020), Goat anti-Rabbit Light Chain HRP Conjugate (Cat. No. A120-113P) and 4-12% SDS-PAGE (link to IP-western blot protocol in Additional Info section below).

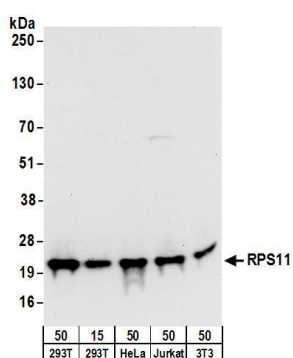
Western blot of lysates performed using standard western blot reagents and 4-12% SDS-PAGE.

IHC HUMAN CONTROLS Breast Carcinoma, Ovarian Carcinoma

ADDITIONAL INFO <https://www.bethyl.com/product/A303-936A>

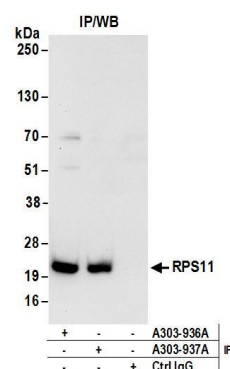
Use the link above to view SDS, a current list of citations, and other product specific information. IP-western blot protocol: https://www.bethyl.com/content/protocol_IP_WB

This document certifies that this product has met all of the quality control standards defined by Bethyl Laboratories, Inc.
Eric McIntush, PhD | Chief Scientific Officer Date: June 21, 2019



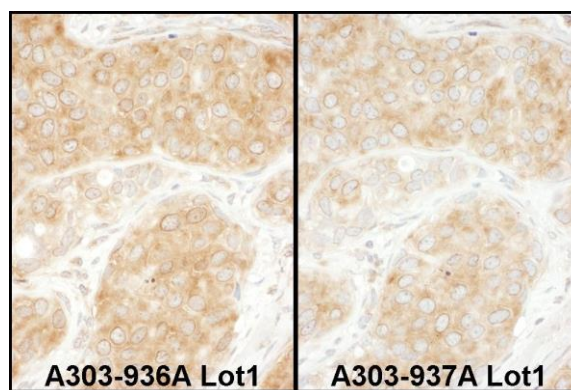
Detection of human and mouse RPS11 by western blot.

Samples: Whole cell lysate from HEK293T (15 and 50 µg), HeLa (50µg), Jurkat (50µg), and mouse NIH 3T3 (50µg) cells. **Antibodies:** Affinity purified rabbit anti-RPS11 antibody A303-936A (lot A303-936A-1) used for WB at 0.1 µg/ml. **Detection:** Chemiluminescence with an exposure time of 10 seconds.



Detection of human RPS11 by western blot of immunoprecipitates.

Samples: Whole cell lysate (1 mg for IP; 20% of IP loaded) from HEK293T cells. **Antibodies:** Affinity purified rabbit anti-RPS11 antibody A303-936A (lot A303-936A-1) used for IP at 6 µg/mg lysate. RPS11 was also immunoprecipitated by rabbit anti-RPS11 antibody A303-937A. For blotting immunoprecipitated RPS11, A303-936A was used at 0.4 µg/ml. **Detection:** Chemiluminescence with an exposure time of 10 seconds.



Detection of human RPS11 by immunohistochemistry.

Samples: FFPE serial sections of human breast carcinoma. **Antibody:** Affinity purified rabbit anti-RPS11 (Cat. No. A303-939A Lot1, left image and Cat. No. A303-937A Lot1, right image) used at a dilution of 1:1,000 (1 µg/ml). **Detection:** DAB