

p190RhoGEF Antibody

Rabbit Polyclonal

Antigen Affinity Purified

Protein ID NP_001171164.1

Catalog No. A303-930A

GeneID 64283

Lot No. A303-930A-1



APPLICATIONS	WB, IP
SPECIES REACTIVITY	Human
AMOUNT	100 µl
CONCENTRATION	1000 µg/ml
STORAGE/SHELF LIFE	2 - 8° C / 1 year from date of receipt
PHYSICAL STATE	Liquid
BUFFER	Tris-citrate/phosphate buffer, pH 7 to 8 containing 0.09% Sodium Azide
ISOTYPE	IgG
ORIGIN	USA
PRODUCTION PROCEDURES	Antibody was affinity purified using an epitope specific to p190RhoGEF immobilized on solid support.

The epitope recognized by A303-930A maps to a region between residue 1655 and 1705 of human 190 kDa, Rho-Guanine Nucleotide Exchange Factor using the numbering given in entry NP_001171164.1 (GeneID 64283).

Antibody concentration was determined by extinction coefficient: absorbance at 280 nm of 1.4 equals 1.0 mg of IgG.

APPLICATIONS Centrifuge tube to remove product from lid. Optimal working dilutions should be determined experimentally by the investigator. Prepare working dilution immediately before use.

Western Blot 1:1,000 - 1:5,000

Immunoprecipitation 2 - 10 µg/mg lysate

APPLICATION NOTES Western blot of immunoprecipitates performed using Normal Pig Serum (Cat. No. S100-020), Goat anti-Rabbit Light Chain HRP Conjugate (Cat. No. A120-113P) and 4-8% SDS-PAGE (link to IP-western blot protocol in Additional Info section below).

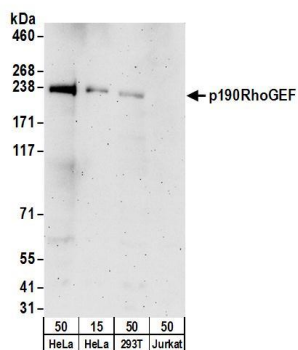
Western blot of lysates performed using standard western blot reagents and 4-8% SDS-PAGE.

ADDITIONAL INFO <https://www.bethyl.com/product/A303-930A>

Use the link above to view SDS, a current list of citations, and other product specific information.

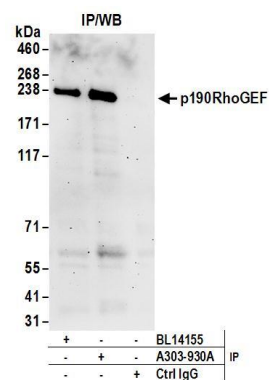
IP-western blot protocol: https://www.bethyl.com/content/protocol_IP_WB

This document certifies that this product has met all of the quality control standards defined by Bethyl Laboratories, Inc.
Eric McIntush, PhD | Chief Scientific Officer Date: June 21, 2019



Detection of human p190RhoGEF by western blot.

Samples: Whole cell lysate from HeLa (15 and 50 µg), HEK293T (50µg), and Jurkat (50µg) cells. **Antibodies:** Affinity purified rabbit anti-p190RhoGEF antibody A303-930A (lot A303-930A-1) used for WB at 0.4 µg/ml. **Detection:** Chemiluminescence with an exposure time of 3 minutes.



Detection of human p190RhoGEF by western blot of immunoprecipitates.

Samples: Whole cell lysate (1 mg for IP; 20% of IP loaded) from HeLa cells. **Antibodies:** Affinity purified rabbit anti-p190RhoGEF antibody A303-930A (lot A303-930A-1) used for IP at 6 µg/mg lysate. p190RhoGEF was also immunoprecipitated by rabbit anti-p190RhoGEF antibody BL14155. For blotting immunoprecipitated p190RhoGEF, A303-930A was used at 1 µg/ml. **Detection:** Chemiluminescence with an exposure time of 3 minutes.