

RENT2 Antibody

Rabbit Polyclonal

Antigen Affinity Purified

Protein ID NP_056357.1

Catalog No. A303-929A

GeneID 26019

Lot No. A303-929A-1



APPLICATIONS	WB, IP
SPECIES REACTIVITY	Human, Mouse
AMOUNT	100 µl
CONCENTRATION	1000 µg/ml
STORAGE/SHELF LIFE	2 - 8° C / 1 year from date of receipt
PHYSICAL STATE	Liquid
BUFFER	Tris-citrate/phosphate buffer, pH 7 to 8 containing 0.09% Sodium Azide
ISOTYPE	IgG
ORIGIN	USA
PRODUCTION PROCEDURES	Antibody was affinity purified using an epitope specific to RENT2 immobilized on solid support.

The epitope recognized by A303-929A maps to a region between residue 1 and 50 of human Regulator of Nonsense Transcripts 2 using the numbering given in entry NP_056357.1 (GeneID 26019).

Antibody concentration was determined by extinction coefficient: absorbance at 280 nm of 1.4 equals 1.0 mg of IgG.

APPLICATIONS Centrifuge tube to remove product from lid. Optimal working dilutions should be determined experimentally by the investigator. Prepare working dilution immediately before use.

Western Blot 1:1,000 - 1:5,000

Immunoprecipitation 2 - 10 µg/mg lysate

APPLICATION NOTES Western blot of immunoprecipitates performed using Normal Pig Serum (Cat. No. S100-020), Goat anti-Rabbit Light Chain HRP Conjugate (Cat. No. A120-113P) and 4-8% SDS-PAGE (link to IP-western blot protocol in Additional Info section below).

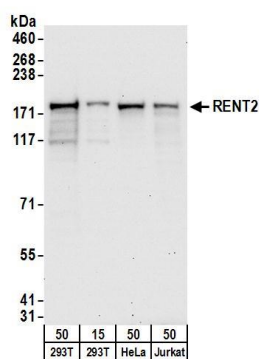
Western blot of lysates performed using standard western blot reagents and 4-8% SDS-PAGE.

ADDITIONAL INFO <https://www.bethyl.com/product/A303-929A>

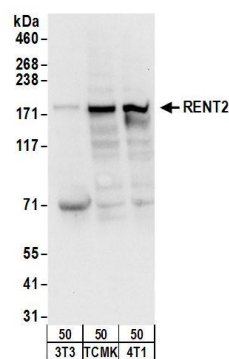
Use the link above to view SDS, a current list of citations, and other product specific information.

IP-western blot protocol: https://www.bethyl.com/content/protocol_IP_WB

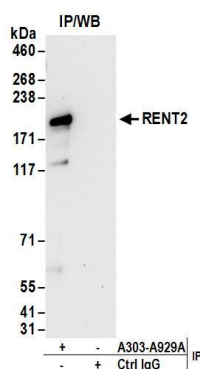
This document certifies that this product has met all of the quality control standards defined by Bethyl Laboratories, Inc.
Eric McIntush, PhD | Chief Scientific Officer Date: June 21, 2019



Detection of human RENT2 by western blot. *Samples:* Whole cell lysate from HEK293T (15 and 50 µg), HeLa (50 µg), and Jurkat (50µg) cells. *Antibodies:* Affinity purified rabbit anti-RENT2 antibody A303-929A (lot A303-929A-1) used for WB at 0.4 µg/ml. *Detection:* Chemiluminescence with an exposure time of 30 seconds.



Detection of mouse RENT2 by western blot. *Samples:* Whole cell lysate from mouse NIH 3T3 (50µg), TCMK-1 (50 µg), and 4T1 (50µg) cells. *Antibodies:* Affinity purified rabbit anti-RENT2 antibody A303-929A (lot A303-929A-1) used for WB at 1 µg/ml. *Detection:* Chemiluminescence with an exposure time of 10 seconds.



Detection of human RENT2 by western blot of immunoprecipitates. *Samples:* Whole cell lysate (1 mg for IP; 20% of IP loaded) from HEK293T cells. *Antibodies:* Affinity purified rabbit anti-RENT2 antibody A303-929A (lot A303-929A-1) used for IP at 6 µg/mg lysate. For blotting immunoprecipitated RENT2, A303-929A was used at 1 µg/ml. *Detection:* Chemiluminescence with an exposure time of 30 seconds.