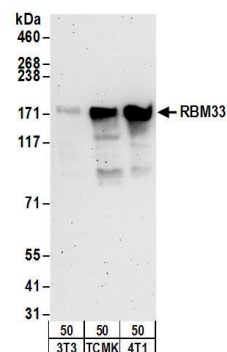


Detection of human RBM33 by western blot. *Samples:* Whole cell lysate from Jurkat (15 and 50 μg), HeLa (50 μg), and HEK293T (50 μg) cells. *Antibodies:* Affinity purified rabbit anti-RBM33 antibody A303-928A (lot A303-928A-1) used for WB at 0.1 $\mu\text{g}/\text{ml}$. *Detection:* Chemiluminescence with an exposure time of 30 seconds.



Detection of mouse RBM33 by western blot. *Samples:* Whole cell lysate from mouse NIH 3T3 (50 μg), TCMK-1 (50 μg), and 4T1 (50 μg) cells. *Antibodies:* Affinity purified rabbit anti-RBM33 antibody A303-928A (lot A303-928A-1) used for WB at 0.4 $\mu\text{g}/\text{ml}$. *Detection:* Chemiluminescence with an exposure time of 3 minutes.