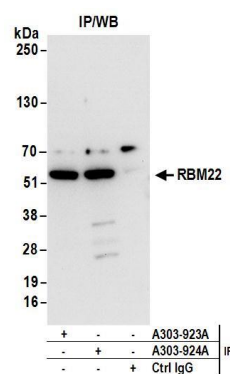


Detection of human and mouse RBM22 by western blot.

Samples: Whole cell lysate from HEK293T (15 and 50 μ g), HeLa (50 μ g), Jurkat (50 μ g), and mouse NIH 3T3 (50 μ g) cells. **Antibodies:** Affinity purified rabbit anti-RBM22 antibody A303-924A (lot A303-924A-1) used for WB at 0.1 μ g/ml. **Detection:** Chemiluminescence with an exposure time of 30 seconds.



Detection of human RBM22 by western blot of immunoprecipitates.

Samples: Whole cell lysate (1 mg for IP; 20% of IP loaded) from HEK293T cells. **Antibodies:** Affinity purified rabbit anti-RBM22 antibody A303-924A (lot A303-924A-1) used for IP at 6 μ g/mg lysate. RBM22 was also immunoprecipitated by rabbit anti-RBM22 antibody A303-923A. For blotting immunoprecipitated RBM22, A303-924A was used at 1 μ g/ml. **Detection:** Chemiluminescence with an exposure time of 3 seconds.