

RBM22 Antibody

Rabbit Polyclonal

Antigen Affinity Purified	RefSeq ID	NP_060517.1
Catalog No. A303-923A	Uniprot ID	Q9NW64
Lot No. A303-923A-2	GeneID	55696

APPLICATIONS	WB, IP
SPECIES REACTIVITY	Human, Mouse
PRESUMED REACTIVITY	Based on 100% sequence identity, this antibody is predicted to react with Rat, Zebrafish, X. laevis, X. tropicalis, Chicken, Bovine and Orangutan
AMOUNT	100 µl
CONCENTRATION	1000 µg/ml
STORAGE/SHELF LIFE	2 – 8°C / 1 year from date of receipt
PHYSICAL STATE	Liquid
BUFFER	Tris-citrate/phosphate buffer, pH 7 to 8 containing 0.09% Sodium Azide
ISOTYPE	IgG
ORIGIN	USA
PRODUCTION PROCEDURES	Antibody was affinity purified using an epitope specific to RBM22 immobilized on solid support.

The epitope recognized by A303-923A maps to a region between residue 175 and 225 of human RNA Binding Motif Protein 22 using the numbering given in entry NP_060517.1 (GeneID 55696).

Antibody concentration was determined by extinction coefficient: absorbance at 280 nm of 1.4 equals 1.0 mg of IgG.

APPLICATIONS Centrifuge tube to remove product from lid. Optimal working dilutions should be determined experimentally by the investigator. Prepare working dilution immediately before use.

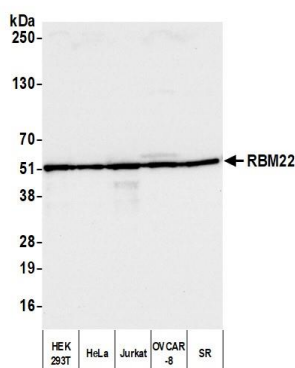
Western Blot 1:10,000 – 1:25,000

Immunoprecipitation 2 – 10 µg/mg lysate

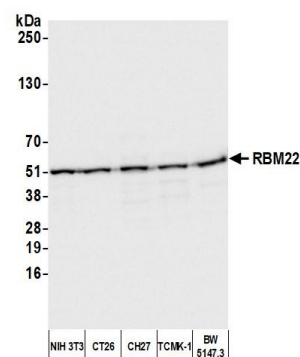
ADDITIONAL INFO <https://www.fortislifesciences.com/p/A303-923A>

Use the link above to view SDS, a current list of citations, and other product specific information.

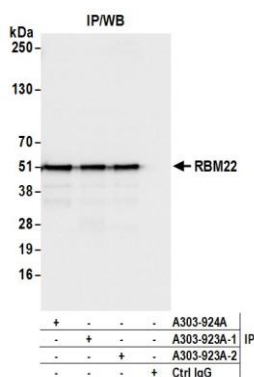
This document certifies that this product has met all of the quality control standards defined by Bethyl Laboratories, Inc.
Michael Spencer, PhD Date: September 15, 2022



Detection of human RBM22 by western blot. *Samples:* Whole cell lysate (10 µg) from HEK293T, HeLa, Jurkat, OVCAR-8, and SR cells prepared using NETN lysis buffer. *Antibody:* Affinity purified rabbit anti-RBM22 antibody (A303-923A lot 2) used for WB at 0.04 µg/ml. *Detection:* Chemiluminescence with an exposure time of 3 seconds.



Detection of mouse RBM22 by western blot. *Samples:* Whole cell lysate (10 µg) from NIH 3T3, CT26, CH27, TCMK-1, and BW5147.3 cells prepared using NETN lysis buffer. *Antibody:* Affinity purified rabbit anti-RBM22 antibody (A303-923A lot 2) used for WB at 0.04 µg/ml. *Detection:* Chemiluminescence with an exposure time of 1 second.



Detection of human RBM22 by western blot of immunoprecipitates. *Samples:* Whole cell lysate (1.0 mg per IP reaction; 5% of IP loaded) from HEK293T cells prepared using NETN lysis buffer. *Antibodies:* Affinity purified rabbit anti-RBM22 antibody (A303-923A lot 2) used for IP at 6 µg per reaction. RBM22 was also immunoprecipitated by a previous lot of this antibody (A303-923A lot 1) and a second antibody against a different epitope of RBM22 (A303-924A). For blotting immunoprecipitated RBM22, A303-923A was used at 0.04 µg/ml. *Detection:* Chemiluminescence with an exposure time of 1 second.