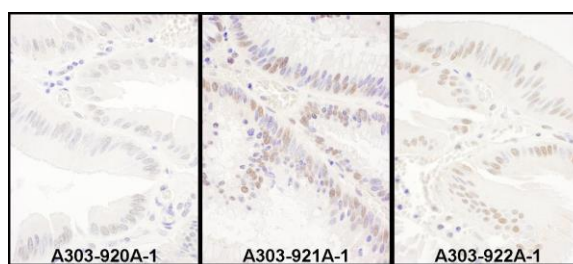


Detection of human and mouse PRPF8 by western blot.

Samples: Whole cell lysate from HEK293T (15 and 50 µg), HeLa (50µg), Jurkat (50µg), and mouse NIH 3T3 (50µg) cells. *Antibodies:* Affinity purified rabbit anti-PRPF8 antibody A303-921A (lot A303-921A-1) used for WB at 0.1 µg/ml. *Detection:* Chemiluminescence with an exposure time of 30 seconds.

Detection of human PRPF8 by western blot of immunoprecipitates.

Samples: Whole cell lysate (1 mg for IP; 20% of IP loaded) from HEK293T cells. *Antibodies:* Affinity purified rabbit anti-PRPF8 antibody A303-921A (lot A303-921A-1) used for IP at 6 µg/mg lysate. PRPF8 was also immunoprecipitated by rabbit anti-PRPF8 antibodies A303-920A and A303-922A For blotting immunoprecipitated PRPF8, A303-921A was used at 1 µg/ml. *Detection:* Chemiluminescence with an exposure time of 10 seconds.



Detection of human PRPF8 by immunohistochemistry.

Samples: FFPE serial sections of human colon carcinoma. *Antibody:* Affinity purified rabbit anti- PRPF8 (Cat. No. A303-920A Lot1, left panel, A303-921A Lot1, middle panel and Cat. No. A303-922A Lot1, right panel) used at a dilution of 1:1,000 (1µg/ml). *Detection:* DAB