

PHAX Antibody

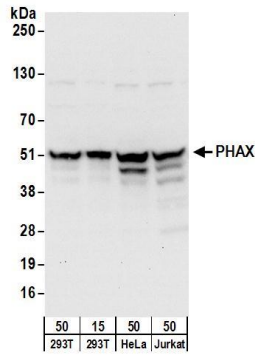
Rabbit Polyclonal

Antigen Affinity Purified	Protein ID	NP_115553.2
Catalog No. A303-916A	GeneID	51808
Lot No. A303-916A-1		

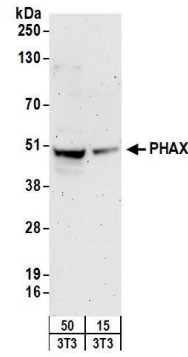


APPLICATIONS	WB, IP				
SPECIES REACTIVITY	Human, Mouse				
AMOUNT	100 μ l				
CONCENTRATION	1000 μ g/ml				
STORAGE/SHELF LIFE	2 - 8° C / 1 year from date of receipt				
PHYSICAL STATE	Liquid				
BUFFER	Tris-citrate/phosphate buffer, pH 7 to 8 containing 0.09% Sodium Azide				
ISOTYPE	IgG				
ORIGIN	USA				
PRODUCTION PROCEDURES	<p>Antibody was affinity purified using an epitope specific to PHAX immobilized on solid support.</p> <p>The epitope recognized by A303-916A maps to a region between residue 344 and 394 of human Phosphorylated Adaptor for RNA Export using the numbering given in entry NP_115553.2 (GeneID 51808).</p> <p>Antibody concentration was determined by extinction coefficient: absorbance at 280 nm of 1.4 equals 1.0 mg of IgG.</p>				
APPLICATIONS	<p>Centrifuge tube to remove product from lid. Optimal working dilutions should be determined experimentally by the investigator. Prepare working dilution immediately before use.</p> <table><tr><td>Western Blot</td><td>1:2,000 - 1:10,000</td></tr><tr><td>Immunoprecipitation</td><td>2 - 10 μg/mg lysate</td></tr></table>	Western Blot	1:2,000 - 1:10,000	Immunoprecipitation	2 - 10 μ g/mg lysate
Western Blot	1:2,000 - 1:10,000				
Immunoprecipitation	2 - 10 μ g/mg lysate				
APPLICATION NOTES	<p>Western blot of immunoprecipitates performed using Normal Pig Serum (Cat. No. S100-020), Goat anti-Rabbit Light Chain HRP Conjugate (Cat. No. A120-113P) and 4-20% SDS-PAGE (link to IP-western blot protocol in Additional Info section below).</p> <p>Western blot of lysates performed using standard western blot reagents and 4-20% SDS-PAGE.</p>				
ADDITIONAL INFO	<p>https://www.bethyl.com/product/A303-916A</p> <p>Use the link above to view SDS, a current list of citations, and other product specific information.</p> <p>IP-western blot protocol: https://www.bethyl.com/content/protocol_IP_WB</p>				

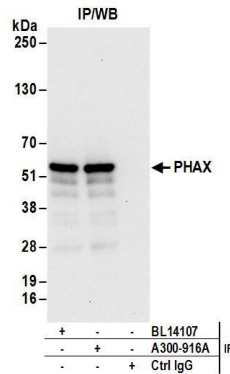
This document certifies that this product has met all of the quality control standards defined by Bethyl Laboratories, Inc.
Eric McIntush, PhD | Chief Scientific Officer Date: June 21, 2019



Detection of human PHAX by western blot. *Samples:* Whole cell lysate from HEK293T (15 and 50 µg), HeLa (50 µg), and Jurkat (50µg) cells. *Antibodies:* Affinity purified rabbit anti-PHAX antibody A303-916A (lot A303-916A-1) used for WB at 0.1 µg/ml. *Detection:* Chemiluminescence with an exposure time of 10 seconds.



Detection of mouse PHAX by western blot. *Samples:* Whole cell lysate from mouse NIH 3T3 (15 and 50 µg) cells. *Antibodies:* Affinity purified rabbit anti-PHAX antibody A303-916A (lot A303-916A-1) used for WB at 0.4 µg/ml. *Detection:* Chemiluminescence with an exposure time of 3 minutes.



Detection of human PHAX by western blot of immunoprecipitates. *Samples:* Whole cell lysate (1 mg for IP; 20% of IP loaded) from HEK293T cells. *Antibodies:* Affinity purified rabbit anti-PHAX antibody A303-916A (lot A303-916A-1) used for IP at 6 µg/mg lysate. PHAX was also immunoprecipitated by rabbit anti-PHAX antibody BL14107. For blotting immunoprecipitated PHAX, A303-916A was used at 0.1 µg/ml. *Detection:* Chemiluminescence with an exposure time of 10 seconds.