

53BP1 Antibody

Goat Polyclonal

Antigen Affinity Purified

Catalog No. A303-906A

Lot No. A303-906A-1

Protein ID NP_005648.1

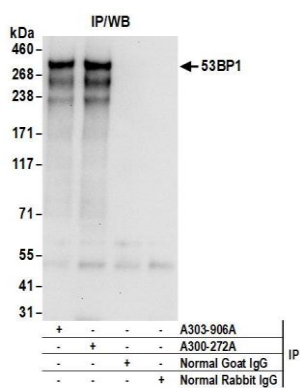
GeneID 7158



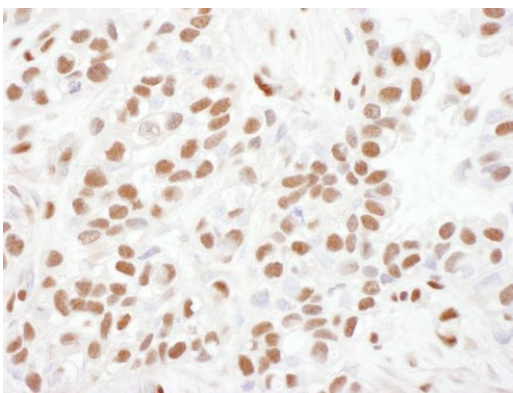
APPLICATIONS	IP, IHC						
SPECIES REACTIVITY	Human						
AMOUNT	100 µl						
CONCENTRATION	1000 µg/ml						
STORAGE/SHELF LIFE	2 – 8° C / 1 year from date of receipt						
PHYSICAL STATE	Liquid						
BUFFER	Tris-citrate/phosphate buffer, pH 7 to 8 containing 0.09% Sodium Azide						
ISOTYPE	IgG						
ORIGIN	USA						
PRODUCTION PROCEDURES	<p>Antibody was affinity purified using an epitope specific to 53BP1 immobilized on solid support.</p> <p>The epitope recognized by A303-906A maps to a region between residue 350 and 400 of human Tumor Protein p53 Binding Protein, 1 using the numbering given in entry NP_005648.1 (GeneID 7158).</p> <p>Antibody concentration was determined by extinction coefficient: absorbance at 280 nm of 1.4 equals 1.0 mg of IgG.</p>						
APPLICATIONS	<p>Centrifuge tube to remove product from lid. Optimal working dilutions should be determined experimentally by the investigator. Prepare working dilution immediately before use.</p> <table><tr><td>Western Blot</td><td>Not recommended</td></tr><tr><td>Immunoprecipitation</td><td>2 – 10 µg/mg lysate</td></tr><tr><td>Immunohistochemistry</td><td>1:500 – 1:2,000. Epitope retrieval with citrate buffer pH 6.0 is recommended for FFPE tissue sections.</td></tr></table>	Western Blot	Not recommended	Immunoprecipitation	2 – 10 µg/mg lysate	Immunohistochemistry	1:500 – 1:2,000. Epitope retrieval with citrate buffer pH 6.0 is recommended for FFPE tissue sections.
Western Blot	Not recommended						
Immunoprecipitation	2 – 10 µg/mg lysate						
Immunohistochemistry	1:500 – 1:2,000. Epitope retrieval with citrate buffer pH 6.0 is recommended for FFPE tissue sections.						
APPLICATION NOTES	Western blot of lysates performed using standard western blot reagents and 4–8% SDS-PAGE.						
IHC HUMAN CONTROLS	Breast Carcinoma, Colon Carcinoma, Ovarian Carcinoma, Prostate Carcinoma, Stomach Adenocarcinoma, Testicular Seminoma						
ADDITIONAL INFO	<p>https://www.bethyl.com/product/A303-906A</p> <p>Use the link above to view SDS, a current list of citations, and other product specific information.</p>						

This document certifies that this product has met all of the quality control standards defined by Bethyl Laboratories, Inc.
Eric McIntush, PhD | Chief Scientific Officer

Date: June 21, 2019



Detection of human 53BP1 by western blot of immunoprecipitates. *Samples:* Whole cell lysate (1 mg for IP; 20% of IP loaded) from HEK293T cells. *Antibodies:* Affinity purified goat anti-53BP1 antibody A303-906A (lot A303-906A-1) used for IP at 6 µg/mg lysate. 53BP1 was also immunoprecipitated by rabbit anti-53BP1 antibody A300-272A. For blotting immunoprecipitated 53BP1, A300-272A was used at 1 µg/ml. *Detection:* Chemiluminescence with an exposure time of 10 seconds.



Detection of human 53BP1 by immunohistochemistry. *Sample:* FFPE section of human breast carcinoma. *Antibody:* Affinity purified goat anti-53BP1 (Cat. No. A303-906A lot 1) used at a dilution of 1:1,000 (1 µg/ml). > Detection: DAB