

SS-B Antibody

Rabbit Polyclonal

Antigen Affinity Purified

Protein ID NP_003133.1

Catalog No. A303-902A

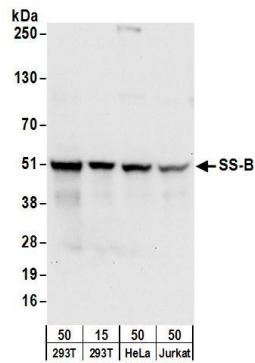
GeneID 6741

Lot No. A303-902A-1

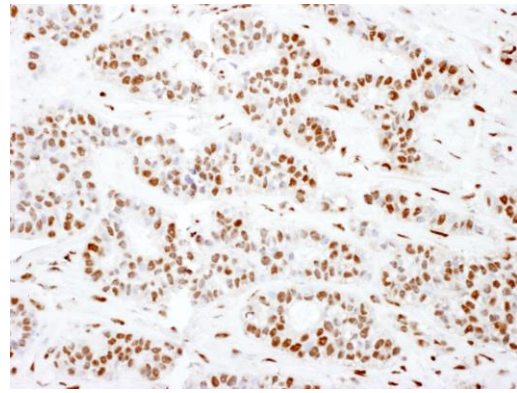


APPLICATIONS	WB, IHC						
SPECIES REACTIVITY	Human						
PRESUMED REACTIVITY	Based on 100% sequence identity, this antibody is predicted to react with Bovine and Rabbit						
AMOUNT	100 µl						
CONCENTRATION	1000 µg/ml						
STORAGE/SHELF LIFE	2 - 8° C / 1 year from date of receipt						
PHYSICAL STATE	Liquid						
BUFFER	Tris-citrate/phosphate buffer, pH 7 to 8 containing 0.09% Sodium Azide						
ISOTYPE	IgG						
ORIGIN	USA						
PRODUCTION PROCEDURES	<p>Antibody was affinity purified using an epitope specific to SS-B immobilized on solid support.</p> <p>The epitope recognized by A303-902A maps to a region between residue 358 and 408 of human Sjogren Syndrome Antigen B (autoantigen La) using the numbering given in entry NP_003133.1 (GeneID 6741).</p> <p>Antibody concentration was determined by extinction coefficient: absorbance at 280 nm of 1.4 equals 1.0 mg of IgG.</p>						
APPLICATIONS	<p>Centrifuge tube to remove product from lid. Optimal working dilutions should be determined experimentally by the investigator. Prepare working dilution immediately before use.</p> <table><tr><td>Western Blot</td><td>1:2,000 - 1:10,000</td></tr><tr><td>Immunoprecipitation</td><td>Not recommended</td></tr><tr><td>Immunohistochemistry</td><td>1:2,000 - 1:10,000. Epitope retrieval with citrate buffer pH 6.0 is recommended for FFPE tissue sections.</td></tr></table>	Western Blot	1:2,000 - 1:10,000	Immunoprecipitation	Not recommended	Immunohistochemistry	1:2,000 - 1:10,000. Epitope retrieval with citrate buffer pH 6.0 is recommended for FFPE tissue sections.
Western Blot	1:2,000 - 1:10,000						
Immunoprecipitation	Not recommended						
Immunohistochemistry	1:2,000 - 1:10,000. Epitope retrieval with citrate buffer pH 6.0 is recommended for FFPE tissue sections.						
APPLICATION NOTES	Western blot of lysates performed using standard western blot reagents and 4-20% SDS-PAGE.						
IHC HUMAN CONTROLS	Breast Carcinoma, Colon Carcinoma, Ovarian Carcinoma, Prostate Carcinoma, Stomach Adenocarcinoma, Testicular Seminoma						
ADDITIONAL INFO	<p>https://www.bethyl.com/product/A303-902A</p> <p>Use the link above to view SDS, a current list of citations, and other product specific information.</p>						

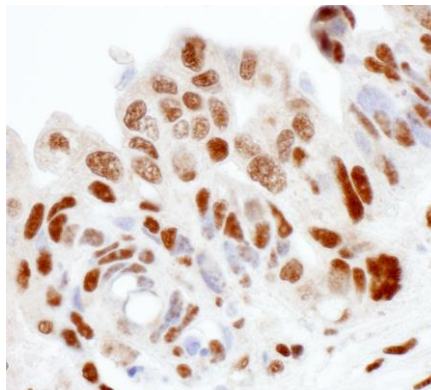
This document certifies that this product has met all of the quality control standards defined by Bethyl Laboratories, Inc.
Eric McIntush, PhD | Chief Scientific Officer Date: June 21, 2019



Detection of human SS-B by western blot. *Samples:* Whole cell lysate from HEK293T (15 and 50 µg), HeLa (50µg), and Jurkat (50µg) cells. *Antibodies:* Affinity purified rabbit anti-SS-B antibody A303-902A (lot A303-902A-1) used for WB at 0.1 µg/ml. *Detection:* Chemiluminescence with an exposure time of 10 seconds.



Detection of human SS-B by immunohistochemistry. *Sample:* FFPE section of human breast carcinoma. *Antibody:* Affinity purified rabbit anti-SS-B (Cat. No. A303-902A Lot1) used at a dilution of 1:5,000 (0.2µg/ml). *Detection:* DAB



Detection of human SS-B by immunohistochemistry. *Sample:* FFPE section of human ovarian carcinoma. *Antibody:* Affinity purified rabbit anti-SS-B (Cat. No. A303-902A Lot1) used at a dilution of 1:5,000 (0.2µg/ml). *Detection:* DAB