

# hnRNP-L Antibody

Rabbit Polyclonal

Antigen Affinity Purified

Protein ID NP\_001524.2

Catalog No. A303-896A

GeneID 3191

Lot No. A303-896A-1



<b>APPLICATIONS</b>	WB, IP, IHC
<b>SPECIES REACTIVITY</b>	Human, Mouse
<b>AMOUNT</b>	100 µl
<b>CONCENTRATION</b>	1000 µg/ml
<b>STORAGE/SHELF LIFE</b>	2 - 8° C / 1 year from date of receipt
<b>PHYSICAL STATE</b>	Liquid
<b>BUFFER</b>	Tris-citrate/phosphate buffer, pH 7 to 8 containing 0.09% Sodium Azide
<b>ISOTYPE</b>	IgG
<b>ORIGIN</b>	USA
<b>PRODUCTION PROCEDURES</b>	Antibody was affinity purified using an epitope specific to hnRNP-L immobilized on solid support.

The epitope recognized by A303-896A maps to a region between residue 539 and 589 of human Heterogeneous Nuclear Ribonucleoprotein L using the numbering given in entry NP\_001524.2 (GeneID 3191).

Antibody concentration was determined by extinction coefficient: absorbance at 280 nm of 1.4 equals 1.0 mg of IgG.

**APPLICATIONS** Centrifuge tube to remove product from lid. Optimal working dilutions should be determined experimentally by the investigator. Prepare working dilution immediately before use.

Western Blot 1:2,000 - 1:10,000

Immunoprecipitation 2 - 10 µg/mg lysate

Immunohistochemistry 1:500 - 1:2,000. Epitope retrieval with citrate buffer pH 6.0 is recommended for FFPE tissue sections.

**APPLICATION NOTES** Western blot of immunoprecipitates performed using Normal Pig Serum (Cat. No. S100-020), Goat anti-Rabbit Light Chain HRP Conjugate (Cat. No. A120-113P) and 4-20% SDS-PAGE (link to IP-western blot protocol in Additional Info section below).

**IHC HUMAN CONTROLS** Western blot of lysates performed using standard western blot reagents and 4-20% SDS-PAGE. Breast Carcinoma, Colon Carcinoma, Ovarian Carcinoma, Prostate Carcinoma, Stomach Adenocarcinoma, Testicular Seminoma

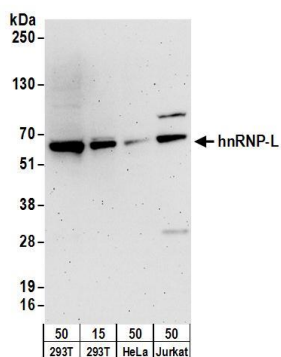
**IHC MOUSE CONTROLS** Renal Cell Carcinoma, Teratoma

**ADDITIONAL INFO** <https://www.bethyl.com/product/A303-896A>

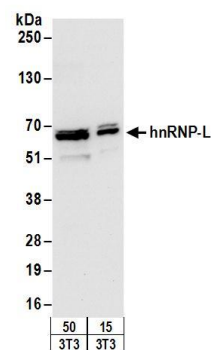
Use the link above to view SDS, a current list of citations, and other product specific information.

IP-western blot protocol: [https://www.bethyl.com/content/protocol\\_IP\\_WB](https://www.bethyl.com/content/protocol_IP_WB)

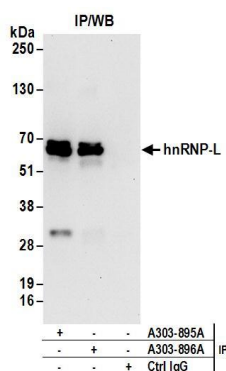
This document certifies that this product has met all of the quality control standards defined by Bethyl Laboratories, Inc.  
Eric McIntush, PhD | Chief Scientific Officer Date: June 21, 2019



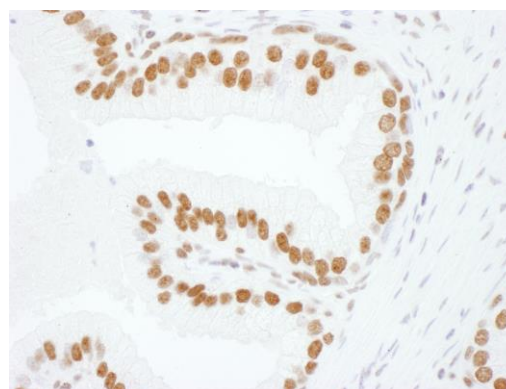
**Detection of human hnRNP-L by western blot.** *Samples:* Whole cell lysate from HEK293T (15 and 50 µg), HeLa (50 µg), and Jurkat (50µg) cells. *Antibodies:* Affinity purified rabbit anti-hnRNP-L antibody A303-896A (lot A303-896A-1) used for WB at 0.1 µg/ml. *Detection:* Chemiluminescence with an exposure time of 3 minutes.



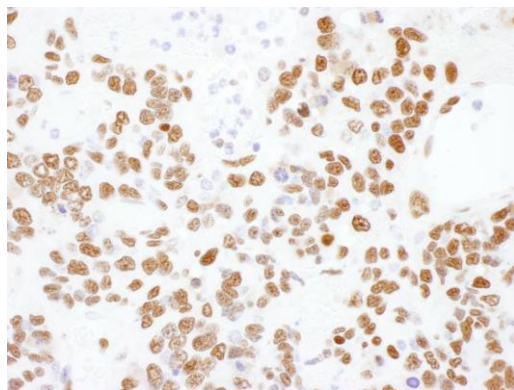
**Detection of mouse hnRNP-L by western blot.** *Samples:* Whole cell lysate (15 and 50 µg) from mouse NIH 3T3 cells. *Antibodies:* Affinity purified rabbit anti-hnRNP-L antibody A303-896A (lot A303-896A-1) used for WB at 0.4 µg/ml. *Detection:* Chemiluminescence with an exposure time of 10 seconds.



**Detection of human hnRNP-L by western blot of immunoprecipitates.** *Samples:* Whole cell lysate (1 mg for IP; 20% of IP loaded) from HEK293T cells. *Antibodies:* Affinity purified rabbit anti-hnRNP-L antibody A303-896A (lot A303-896A-1) used for IP at 6 µg/mg lysate. hnRNP-L was also immunoprecipitated by rabbit anti-hnRNP-L antibody A303-895A. For blotting immunoprecipitated hnRNP-L, A303-896A was used at 1 µg/ml. *Detection:* Chemiluminescence with an exposure time of 10 seconds.



**Detection of human hnRNP-L by immunohistochemistry.** *Sample:* FFPE section of human prostate carcinoma. *Antibody:* Affinity purified rabbit anti- hnRNP-L (Cat. No. A303-896A Lot1) used at a dilution of 1:1,000 (0.2µg/ml). *Detection:* DAB



**Detection of mouse hnRNP-L by immunohistochemistry.**  
*Sample:* FFPE section of mouse teratoma. *Antibody:* Affinity purified rabbit anti- hnRNP-L (Cat. No. A303-896A Lot1) used at a dilution of 1:1,000 (1 µg/ml). *Detection:* DAB