

FXR2 Antibody

Rabbit Polyclonal

Antigen Affinity Purified

Protein ID NP_004851.2

Catalog No. A303-893A

GeneID 9513

Lot No. A303-893A-1



APPLICATIONS WB, IP

SPECIES REACTIVITY Human

AMOUNT 100 µl

CONCENTRATION 1000 µg/ml

STORAGE/SHELF LIFE 2 – 8° C / 1 year from date of receipt

PHYSICAL STATE Liquid

BUFFER Tris-citrate/phosphate buffer, pH 7 to 8 containing 0.09% Sodium Azide

ISOTYPE IgG

ORIGIN USA

PRODUCTION PROCEDURES Antibody was affinity purified using an epitope specific to FXR2 immobilized on solid support.

The epitope recognized by A303-893A maps to a region between residue 600 and 635 of human Fragile X Mental Retardation, Autosomal Homolog 2 using the numbering given in entry NP_004851.2 (GeneID 9513).

Antibody concentration was determined by extinction coefficient: absorbance at 280 nm of 1.4 equals 1.0 mg of IgG.

APPLICATIONS Centrifuge tube to remove product from lid. Optimal working dilutions should be determined experimentally by the investigator. Prepare working dilution immediately before use.

Western Blot 1:2,000 – 1:10,000

Immunoprecipitation 2 – 10 µg/mg lysate

APPLICATION NOTES Western blot of immunoprecipitates performed using Normal Pig Serum (Cat. No. S100-020), Goat anti-Rabbit Light Chain HRP Conjugate (Cat. No. A120-113P) and 4-8% SDS-PAGE (link to IP-western blot protocol in Additional Info section below).

Western blot of lysates performed using standard western blot reagents and 4-8% SDS-PAGE.

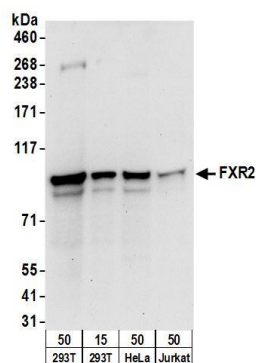
ADDITIONAL INFO

<https://www.bethyl.com/product/A303-893A>

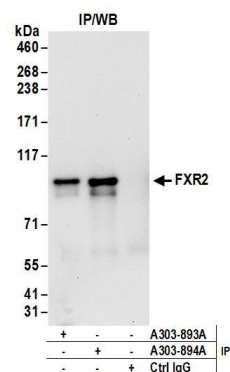
Use the link above to view SDS, a current list of citations, and other product specific information.

IP-western blot protocol: https://www.bethyl.com/content/protocol_IP_WB

This document certifies that this product has met all of the quality control standards defined by Bethyl Laboratories, Inc.
Eric McIntush, PhD | Chief Scientific Officer Date: June 21, 2019



Detection of human FXR2 by western blot. *Samples:* Whole cell lysate from HEK293T (15 and 50 µg), HeLa (50µg), and Jurkat (50µg) cells. *Antibodies:* Affinity purified rabbit anti-FXR2 antibody A303-893A (lot A303-893A-1) used for WB at 0.1 µg/ml. *Detection:* Chemiluminescence with an exposure time of 30 seconds.



Detection of human FXR2 by western blot of immunoprecipitates. *Samples:* Whole cell lysate (1 mg for IP; 20% of IP loaded) from HEK293T cells. *Antibodies:* Affinity purified rabbit anti-FXR2 antibody A303-893A (lot A303-893A-1) used for IP at 6 µg/mg lysate. FXR2 was also immunoprecipitated by rabbit anti-FXR2 antibody A303-894A. For blotting immunoprecipitated FXR2, A303-893A was used at 1 µg/ml. *Detection:* Chemiluminescence with an exposure time of 30 seconds.