

# Fibrillarin Antibody

Rabbit Polyclonal

Antigen Affinity Purified

Protein ID NP\_001427.2

Catalog No. A303-891A

GeneID 2091

Lot No. A303-891A-1



**APPLICATIONS** WB, IP

**SPECIES REACTIVITY** Human, Mouse

**AMOUNT** 100 µl

**CONCENTRATION** 1000 µg/ml

**STORAGE/SHELF LIFE** 2 – 8° C / 1 year from date of receipt

**PHYSICAL STATE** Liquid

**BUFFER** Tris-citrate/phosphate buffer, pH 7 to 8 containing 0.09% Sodium Azide

**ISOTYPE** IgG

**ORIGIN** USA

**PRODUCTION PROCEDURES** Antibody was affinity purified using an epitope specific to Fibrillarin immobilized on solid support.

The epitope recognized by A303-891A maps to a region between residue 271 and 321 of human Fibrillarin using the numbering given in entry NP\_001427.2 (GeneID 2091).

Antibody concentration was determined by extinction coefficient: absorbance at 280 nm of 1.4 equals 1.0 mg of IgG.

**APPLICATIONS** Centrifuge tube to remove product from lid. Optimal working dilutions should be determined experimentally by the investigator. Prepare working dilution immediately before use.

Western Blot 1:1,000 – 1:5,000

Immunoprecipitation 2 – 10 µg/mg lysate

**APPLICATION NOTES** Western blot of immunoprecipitates performed using Normal Pig Serum (Cat. No. S100-020), Goat anti-Rabbit Light Chain HRP Conjugate (Cat. No. A120-113P) and 4-20% SDS-PAGE (link to IP-western blot protocol in Additional Info section below).

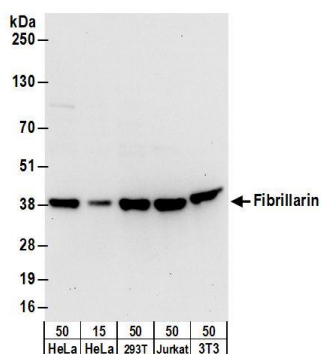
Western blot of lysates performed using standard western blot reagents and 4-20% SDS-PAGE.

**ADDITIONAL INFO** <https://www.bethyl.com/product/A303-891A>

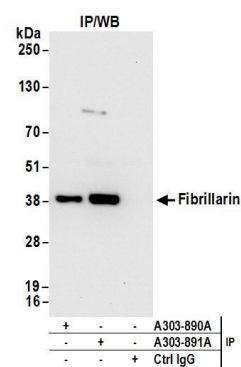
Use the link above to view SDS, a current list of citations, and other product specific information.

IP-western blot protocol: [https://www.bethyl.com/content/protocol\\_IP\\_WB](https://www.bethyl.com/content/protocol_IP_WB)

This document certifies that this product has met all of the quality control standards defined by Bethyl Laboratories, Inc.  
Eric McIntush, PhD | Chief Scientific Officer Date: June 21, 2019



**Detection of human and mouse Fibrillarin by western blot.** *Samples:* Whole cell lysate from HeLa (15 and 50 µg), HEK293T (50µg), Jurkat (50µg), and mouse NIH 3T3 (50µg) cells. *Antibodies:* Affinity purified rabbit anti-Fibrillarin antibody A303-891A (lot A303-891A-1) used for WB at 0.4 µg/ml. *Detection:* Chemiluminescence with an exposure time of 10 seconds.



**Detection of human Fibrillarin by western blot of immunoprecipitates.** *Samples:* Whole cell lysate (1 mg for IP; 20% of IP loaded) from HeLa cells. *Antibodies:* Affinity purified rabbit anti-Fibrillarin antibody A303-891A (lot A303-891A-1) used for IP at 6 µg/mg lysate. Fibrillarin was also immunoprecipitated by rabbit anti-Fibrillarin antibody A303-890A. For blotting immunoprecipitated Fibrillarin, A303-891A was used at 1 µg/ml. *Detection:* Chemiluminescence with an exposure time of 10 seconds.