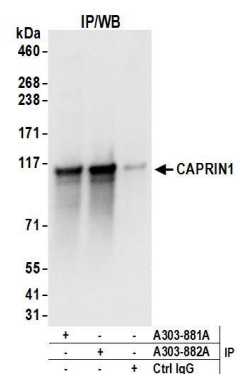


Detection of human and mouse CAPRIN1 by western blot.

Samples: Whole cell lysate from HeLa (15 and 50 μ g), HEK293T (50 μ g), Jurkat (50 μ g), and mouse NIH 3T3 (50 μ g) cells. **Antibodies:** Affinity purified rabbit anti-CAPRIN1 antibody A303-881A (lot A303-881A-1) used for WB at 0.1 μ g/ml. **Detection:** Chemiluminescence with an exposure time of 3 seconds.



Detection of human CAPRIN1 by western blot of immunoprecipitates.

Samples: Whole cell lysate (1 mg for IP; 20% of IP loaded) from HeLa cells. **Antibodies:** Affinity purified rabbit anti-CAPRIN1 antibody A303-881A (lot A303-881A-1) used for IP at 6 μ g/mg lysate. CAPRIN1 was also immunoprecipitated by rabbit anti-CAPRIN1 antibody A303-882A. For blotting immunoprecipitated CAPRIN1, A303-881A was used at 1 μ g/ml. **Detection:** Chemiluminescence with an exposure time of 1 second.