

PSME4 Antibody

Rabbit Polyclonal

Antigen Affinity Purified

Protein ID NP_055429.2

Catalog No. A303-880A

GeneID 23198

Lot No. A303-880A-1



APPLICATIONS	WB, IP, IHC
SPECIES REACTIVITY	Human
AMOUNT	100 µl
CONCENTRATION	1000 µg/ml
STORAGE/SHELF LIFE	2 - 8° C / 1 year from date of receipt
PHYSICAL STATE	Liquid
BUFFER	Tris-citrate/phosphate buffer, pH 7 to 8 containing 0.09% Sodium Azide
ISOTYPE	IgG
ORIGIN	USA
PRODUCTION PROCEDURES	Antibody was affinity purified using an epitope specific to PSME4 immobilized on solid support.

The epitope recognized by A303-880A maps to a region between residue 1 and 50 of human Proteasome (Prosome, Macropain) Activator subunit 4 using the numbering given in entry NP_055429.2 (GeneID 23198).

Antibody concentration was determined by extinction coefficient: absorbance at 280 nm of 1.4 equals 1.0 mg of IgG.

APPLICATIONS Centrifuge tube to remove product from lid. Optimal working dilutions should be determined experimentally by the investigator. Prepare working dilution immediately before use.

Western Blot 1:1,000 - 1:5,000

Immunoprecipitation 2 - 10 µg/mg lysate

Immunohistochemistry 1:500 - 1:2,000. Epitope retrieval with citrate buffer pH 6.0 is recommended for FFPE tissue sections.

APPLICATION NOTES Western blot of immunoprecipitates performed using Normal Pig Serum (Cat. No. S100-020), Goat anti-Rabbit Light Chain HRP Conjugate (Cat. No. A120-113P) and 4-8% SDS-PAGE (link to IP-western blot protocol in Additional Info section below).

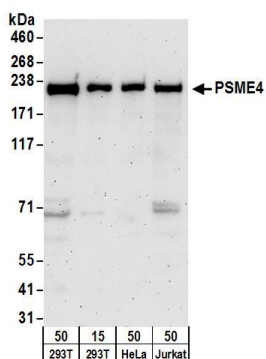
IHC HUMAN CONTROLS Western blot of lysates performed using standard western blot reagents and 4-8% SDS-PAGE. Breast Carcinoma, Non-Small Cell Lung Cancer

ADDITIONAL INFO <https://www.bethyl.com/product/A303-880A>

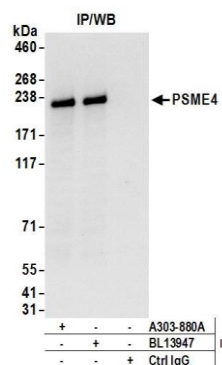
Use the link above to view SDS, a current list of citations, and other product specific information.

IP-western blot protocol: https://www.bethyl.com/content/protocol_IP_WB

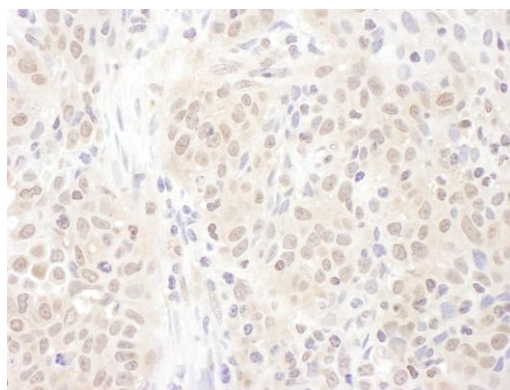
This document certifies that this product has met all of the quality control standards defined by Bethyl Laboratories, Inc.
Eric McIntush, PhD | Chief Scientific Officer Date: June 21, 2019



Detection of human PSME4 by western blot. *Samples:* Whole cell lysate from HEK293T (15 and 50 µg), HeLa (50 µg), and Jurkat (50µg) cells. *Antibodies:* Affinity purified rabbit anti-PSME4 antibody A303-880A (lot A303-880A-1) used for WB at 0.4 µg/ml. *Detection:* Chemiluminescence with an exposure time of 3 minutes.



Detection of human PSME4 by western blot of immunoprecipitates. *Samples:* Whole cell lysate (1 mg for IP; 20% of IP loaded) from HEK293T cells. *Antibodies:* Affinity purified rabbit anti-PSME4 antibody A303-880A (lot A303-880A-1) used for IP at 6 µg/mg lysate. PSME4 was also immunoprecipitated by rabbit anti-PSME4 antibody BL13947. For blotting immunoprecipitated PSME4, A303-880A was used at 1 µg/ml. *Detection:* Chemiluminescence with an exposure time of 10 seconds.



Detection of human PSME4 by immunohistochemistry. *Sample:* FFPE section of human non-small cell lung cancer. *Antibody:* Affinity purified rabbit anti- PSME4 (Cat. No. A303-880A Lot1) used at a dilution of 1:1,000 (1 µg/ml). *Detection:* DAB