

PSME3 Antibody

Rabbit Polyclonal

Antigen Affinity Purified

Protein ID NP_005780.2

Catalog No. A303-879A

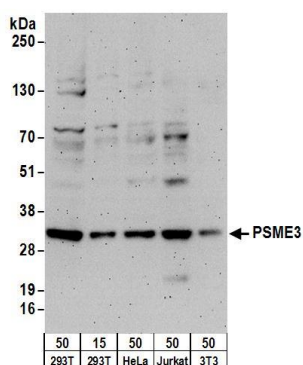
GeneID 10197

Lot No. A303-879A-1

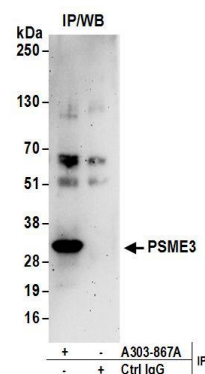


APPLICATIONS	WB, IP, IHC
SPECIES REACTIVITY	Human, Mouse
PRESUMED REACTIVITY	Based on 100% sequence identity, this antibody is predicted to react with Chicken, Pig and Orangutan
AMOUNT	100 µl
CONCENTRATION	1000 µg/ml
STORAGE/SHELF LIFE	2 - 8° C / 1 year from date of receipt
PHYSICAL STATE	Liquid
BUFFER	Tris-citrate/phosphate buffer, pH 7 to 8 containing 0.09% Sodium Azide
ISOTYPE	IgG
ORIGIN	USA
PRODUCTION PROCEDURES	<p>Antibody was affinity purified using an epitope specific to PSME3 immobilized on solid support.</p> <p>The epitope recognized by A303-879A maps to a region between residue 204 and 254 of human Proteasome (Prosome, Macropain) Activator Subunit 3 using the numbering given in entry NP_005780.2 (GeneID 10197).</p> <p>Antibody concentration was determined by extinction coefficient: absorbance at 280 nm of 1.4 equals 1.0 mg of IgG.</p>
APPLICATIONS	<p>Centrifuge tube to remove product from lid. Optimal working dilutions should be determined experimentally by the investigator. Prepare working dilution immediately before use.</p> <p>Western Blot 1:500 - 1:2,500</p> <p>Immunoprecipitation 2 - 10 µg/mg lysate</p> <p>Immunohistochemistry 1:500 - 1:2,000. Epitope retrieval with citrate buffer pH 6.0 is recommended for FFPE tissue sections.</p>
APPLICATION NOTES	<p>Western blot of immunoprecipitates performed using Normal Pig Serum (Cat. No. S100-020), Goat anti-Rabbit Light Chain HRP Conjugate (Cat. No. A120-113P) and 4-20% SDS-PAGE (link to IP-western blot protocol in Additional Info section below).</p> <p>Western blot of lysates performed using standard western blot reagents and 4-20% SDS-PAGE.</p>
IHC HUMAN CONTROLS	Breast Carcinoma, Colon Carcinoma, Non-Small Cell Lung Cancer, Osteosarcoma, Ovarian Carcinoma, Prostate Carcinoma, Stomach Adenocarcinoma, Testis
IHC MOUSE CONTROLS	Hybridoma Tumor, Renal Cell Carcinoma, Teratoma
ADDITIONAL INFO	<p>https://www.bethyl.com/product/A303-879A</p> <p>Use the link above to view SDS, a current list of citations, and other product specific information.</p> <p>IP-western blot protocol: https://www.bethyl.com/content/protocol_IP_WB</p>

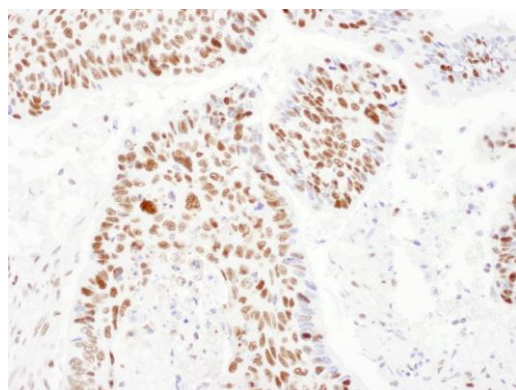
This document certifies that this product has met all of the quality control standards defined by Bethyl Laboratories, Inc.
Eric McIntush, PhD | Chief Scientific Officer Date: June 21, 2019



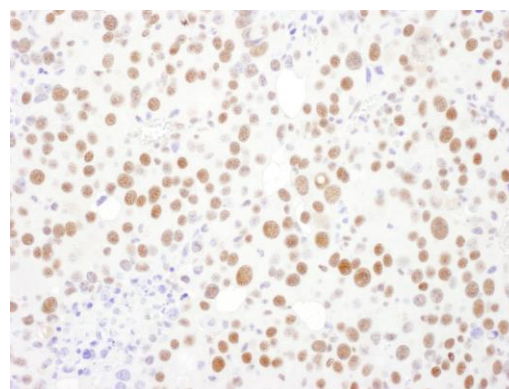
Detection of human and mouse PSME3 by western blot.
Samples: Whole cell lysate from HEK293T (15 and 50 µg), HeLa (50µg), Jurkat (50µg), and mouse NIH 3T3 (50µg) cells. *Antibodies:* Affinity purified rabbit anti-PSME3 antibody A303-879A (lot A303-879A-1) used for WB at 1 µg/ml. *Detection:* Chemiluminescence with an exposure time of 3 minutes.



Detection of human PSME3 by western blot of immunoprecipitates. *Samples:* Whole cell lysate (1 mg for IP; 20% of IP loaded) from HEK293T cells. *Antibodies:* Affinity purified rabbit anti-PSME3 antibody A303-879A (lot A303-879A-1) used for IP at 6 µg/mg lysate. For blotting immunoprecipitated, A303-879A was used at 1 µg/ml. *Detection:* Chemiluminescence with an exposure time of 3 minutes.



Detection of human PSME3 by immunohistochemistry.
Sample: FFPE section of human non-small cell lung cancer. *Antibody:* Affinity purified rabbit anti- PSME3 (Cat. No. A303-879A Lot1) used at a dilution of 1:1,000 (1 µg/ml). *Detection:* DAB



Detection of mouse PSME3 by immunohistochemistry.
Sample: FFPE section of mouse renal cell carcinoma. *Antibody:* Affinity purified rabbit anti- PSME3 (Cat. No. A303-879A Lot1) used at a dilution of 1:1,000 (1 µg/ml). *Detection:* DAB